



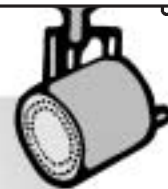
GEORGIA • HEREFORD • ASSOCIATION

NEWSLETTER

NOVEMBER 2006

GHA SPOTLIGHT:

Don and Susan Ritchie's 'Million Dollar View'



Located at the foot of Grassy Mountain, lies one of the most beautiful farms in North Georgia. Some say it has "a million dollar view" and I must agree. This is where Don and Susan Ritchie call home. Standing on the front porch of their home and gazing at the mountains and polled Herefords is a view that some can only dream of.

Don was raised on a dairy farm in Katonah, New York. From an early age he and his brother worked at the dairy. This is where his love of cattle began and he knew one day he would have cattle of his own. Susan was born in Statesville, NC but grew up in Athens, Georgia where her father was a professor at the University of Georgia. She jokingly refers to herself as a "city slicker." But, from observing the work she has put into their farm, I believe she has adapted quite well to farm life.

The couple met while both were attending UGA. Don received a degree in Landscape Architecture and Susan received a degree in Home Economics Education and School Guidance Counseling. They married after college and moved to North Georgia. In 1975 the couple purchased their farm in Crandall, Georgia.

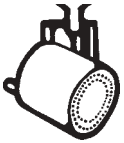
Their first Herefords consisted of two heifers and a bull. Don wanted to add to his herd and sought out the advise of his veterinarian, Dr. David Loughridge. Dr. Loughridge suggested that he attend some of the polled Hereford sales in the area. This way he would know the genetics behind his livestock as well as having a guarantee. The first sale he attended was at the farm of George Queener. While there, he noticed a gentleman that acted like he knew a great deal about cattle and that everyone referred to him as "Doc." Later, he saw an ad for Mont-View's upcoming sale and the name Dr. John Montgomery was listed as the owner. Don and Susan traveled to Niota, Tennessee for that sale and became good friends with the man

(Continued on Page 2)



Don and Susan Ritchie





GHA Spotlight ...

(Continued from Page 1)

that everyone called "Doc." Don said, "I have learned so much about cattle from Dr. Montgomery. He didn't care whether I had 5 or 500 cattle. It did not matter to him." Don and Susan also had the pleasure of meeting Jim and Irma Hadden at this sale. They were having a sale also and Don and Susan traveled to Gibson, Georgia and purchased a heifer from the Hadden's. "The family atmosphere really impressed us," Don said. The polled Hereford family they now belonged to inspired them to purchase more and increase their numbers. But, the foundation of Ritchie Farms is based on Mont-Vue and Hadden females. Don and Susan definitely picked two breed giants to start their own herd.

Over the years, they have added to their herd by using females from Circle M, TRM, Hill-Vue, Whaley Polled Herefords and Leonard Polled Herefords. At present, Don is focusing on the black baldy. He has found it more economical for his operation to lease a Black Angus bull and therefore has a spring calving season. Don markets these cattle through the Georgia Beef Challenge and the Tennessee Livestock Producers. This way he is able to gain information about health, performance and carcass merit.

As we walked through his well-maintained pastures, I noticed how he had them perfectly laid out. "I have seven pastures of about 2 acres each in order to do rotational grazing. Each has a freeze-proof automatic waterer and shade trees. I am staunch supporter of clean, cool, fresh water from an automatic waterer," says Don. The cattle are easily moved from one pasture to the next with the layout Don has created. "When I walk to a gate, they know they are going to get fresh grazing. I can lead them anywhere. This is helpful when I work them and for sale purposes," said Don. All of Don and Susan's cattle are raised on fescue with orchard hay and supplemental minerals in the winter.



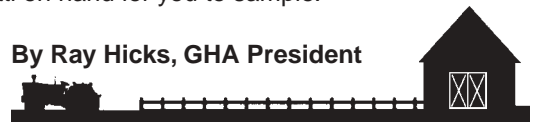
To improve his managed grazing, Don sought out the advise of the Natural Resources Conservation Service. He wanted to fence out his cattle from the creek that runs through the middle of his farm. With the guidance of the Natural Resources Department, he built an area that stabilized the creek banks and restored them with grass. This reduces sources such as runoff from the farm. For his efforts, he was awarded the Conasauga River Alliance Appreciation Award. You can read about Don's project at www.conasaugariver.net/resources/sumacmil/suwatrit.html

Along with Don's membership in the Georgia Hereford Association, he is also involved heavily in his local Murray County Cattlemen's Association. He was recently elected Treasurer. Don says his association with both groups keeps him informed and up-to-date with the cattle industry.

Don and Susan Ritchie have spent many years creating this beautiful farm. It amazed me to see so much thought and planning that has been put into creating their pastures to make sure their cattle are well taken care of at all times. They are true stewards of the land they own. I gained so much knowledge from visiting their operation. If you are ever in the North Georgia area, a visit to Don and Susan Ritchie's farm would well be worth the trip. And, Susan just may have some of her famous Pumpkin Bread or Biscotti on hand for you to sample.

Greetings from the Barn Lot

By Ray Hicks, GHA President



The colors are changing and calves are starting to hit the ground. This is an exciting time of the year, being able to see the effects of your matings in the off spring of your cattle.

In July the juniors traveled to Louisville, Kentucky for the biggest Junior National yet. It was inspiring to see all the young people come together and compete, learn and fellowship with one another. Many fairs and shows are being held this fall and we wish all our juniors well.

The association had a display at the Georgia National Fair as well as the Sunbelt Agricultural Expo. Lots of information was handed out about our breed and our state breeders. If you have never manned the booth at one of these events, it is a very interesting meeting all the different people.

Shortly you will be receiving the new membership directory in the mail. I feel this is one of the best that has been put together.

I want to thank Bill Sims for all the hard work that went into this publication. From the front cover picture, which is of Georgia cattle submitted by our own Tammy Boatman, to all the colorful ads that are inside, I think that you will be pleased.

I, along with Tommy Mead and Seth Ridley, attended the AHA annual meeting in Kansas City in October. It was great getting to visit with breeders from across the nation and also electing new officers to lead our organization.

Just a reminder that we have had new additions (babies) and members that have been sick. So check on your neighbor and share the news with others.

Remember those fall sales and start looking for that good cow to consign to our association sale.

As always, the association is just as strong as its members. See you in the Barn Lot.

Annual Workshop Held for GHA Board of Directors

GHA Board of Directors at the Annual Workshop held in Forsyth, Georgia. Attending were, back row (L-R): Seth Ridley, Bill Sims, Ray Hicks, Tommy Mead, Frank Thomas, Ricky Yarbrough; front row: Randy Roberts, Taylor Neighbors, Bobby Brantley, Sam Zemurray. Not pictured: Whitey Hunt, Billy Martin.



News from the Annual AHA Meeting in Kansas City

Seth Ridley, Tommy Mead and Ray Hicks recently traveled to Kansas City to represent the Georgia Hereford Association during the annual American Hereford Association meeting held October 23. Three new directors were elected to serve on the AHA board. They are Marshall Ernst, Bob Harrell, and Denny Hoffman. Jack Evans was elected to serve as the 2006-2007 President and Hank DeShazer was elected vice President. We appreciate these three men taking time out of their busy schedules to represent Georgia so well.

DVD Highlights Moments in Hereford History

"The Hereford Legacy" is a DVD featuring Bud Snidow, the American Hereford Association Historical Representative. The DVD spotlights significant moments in Hereford history, with a tour of the AHA Headquarters, the Hereford Museum, and a segment with Bud sharing his life, his work and his paintings.

For the past 20-plus years, Bud has continued to be involved in the Hereford industry, pursuing the future while preserving the history. Bud says he has seen a lot of good cattle, but most of all, it is the quality of the people he remembers.

The DVD can be purchased for \$20.00 and would make a wonderful Christmas gift for someone. Please contact Marsha Middleswarth at 307-532-5427 or 6mbulls@prairiewev.com to obtain your copy of this outstanding DVD.

Birth Announcements

Tom and Tammy Boatman, JWR Land & Cattle Company, Rockmart, Georgia, announce the birth of their twins, boy and girl. They were born on September 23, 2006. Thomas "Kade" weighed 6 lbs., 1 oz., and was 18¹/₂ inches long. Taylor "Kendall" weighed 5 lbs., 1 oz., and was 17³/₄ inches long. Their grandparents are Margarete Riffel and Tom and Mimi Boatman.



Truman and Starr Whaley proudly announce the birth of their first grandchild, Reece Stone Whaley. Their new addition arrived September 6, 2006, and weighed 7 lbs., 11 ozs. Proud parents are Cameron and Erin Whaley. Congratulations!

May your thoughts and prayers go out to Lucien Welty during his sickness.



GEORGIA HEREFORD ASSOCIATION OFFICERS

President

Ray Hicks
660 Seaburn Vickery Rd.
Statesboro, GA 30461
912-865-5593

Vice President

Tommy Mead
1222 Reeves Rd.
Midville, GA 30441
706-554-6107

DIRECTORS

Ricky Yarbrough
P.O. Box 426
Gray, GA 31032
478-986-5034

Bill Sims
6062 Jefferson Rd.
Commerce, GA 30529
706-335-6085

Bobby Brantley
1750 Wommack Brantley Rd.
Tennille, GA 31089
478-552-9328

Seth Ridley
130 Dogwood Circle
Chatsworth, GA 30705
706-517-7606

Billy Martin
1359 County Line Rd.
Cummings, GA 30040
404-376-6414

Whitey Hunt
P.O. Box 488
Madison, GA 30650
706-342-0264

Sam Zemurray
477 HoneyRidge Rd.
Guyton, GA 31312
912-772-3118

Taylor Neighbors
525 District Line Rd.
Americus, GA 31709
229-924-0091
229-924-6997

Randy Roberts
296 Bud Hutcheson Rd.
Douglas, GA 31535
912-384-4349

Frank Thomas
Rt. 1, Box 40
Alamo, GA 30411
912-568-7743

GEORGIA POLL-ETTES OFFICERS AND DIRECTORS



President

Diann Strickland
PO Box 128
Mershon, GA 31551
912-647-5439

Vice President

Kay McCurdy
1284 New Hope Rd.
Chatsworth, GA 30705
706-695-9634

Secretary-Treasurer

Debbie Pease
4305 Mallard Pond Rd.
Statesboro, GA 30458
912-587-2388

Director – 2 years

Angie McGinnis
2810 Macedonia Church Rd.
Danielsville, GA 30633

Director – 2 years

Charlene Roberts
296 Bud Hutcheson Rd.
Douglas, GA 31535

Director – 2 years

Robin Mead
1222 Reeves Rd.
Midville, GA 30441

Director – 1 year

Debbie Hicks
660 Seaburn Vickery Rd.
Statesboro, GA 30461

Director – 1 year

Peggy Leonard
1075 Hwy. 225 N.
Chatsworth, GA 30705

Director – 1 year

Pearl Welty
1203 Ethridge Mill Rd.
Griffin, GA 30224

National Director

Starr Whaley, 2634 Riverbend Rd., Dalton, GA 30721



Georgia State Fair Junior Show Winners



GRAND CHAMPION HEIFER

Amanda Roberts, Alapaha, Georgia, with BAER Creek Debutanta 14S ET, 1/4/2006, by BR Wildfire 2153.



HERDSMAN OF THE YEAR

Matt McCurdy was recently named Herdsman of the Year at the Junior National Hereford Expo held in Louisville, Kentucky. Matt is a senior at Oklahoma State University majoring in Animal Science and minoring in Agriculture Economics.



RESERVE CHAMPION HEIFER

Krissi McCurdy, Chatsworth, Georgia, with MM Bling Bling 122L L998, 11/8/2005, by Remital Online 122L.

❖ Mini Booths at the Georgia National Fair at Perry, Georgia ❖

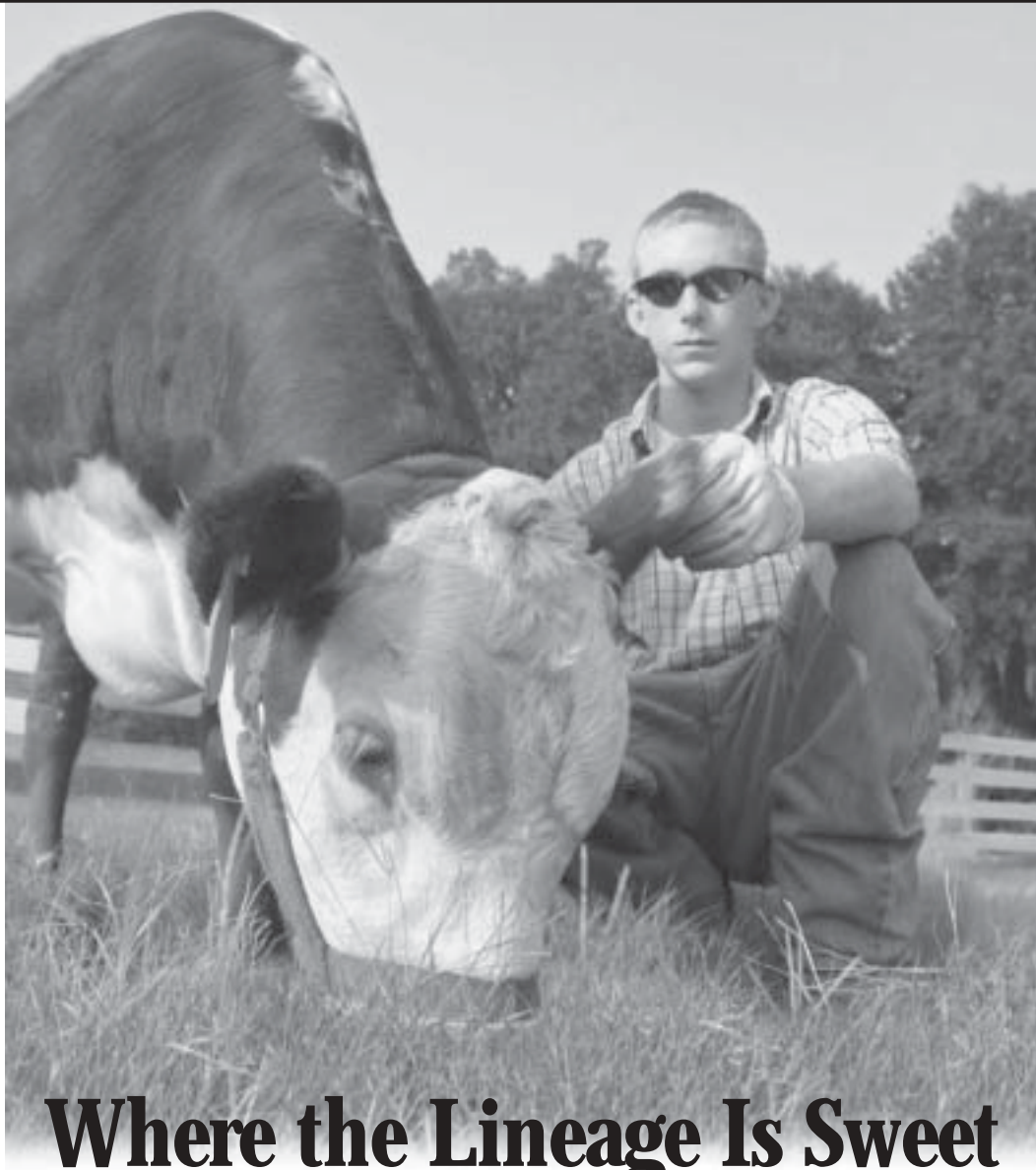


The theme of Ella Sims' mini booth, pictured on left, at the Georgia National Fair in Perry was Homemade Soap, which won her 2nd place as a Junior.



The Scarecrow theme, pictured on right, was Apple Valley Mall Fruit Stand, placing 6th in junior level of competition.





Where the Lineage Is Sweet

And the living is great! We've spent over 25 years building a cattle program that works for our customers from all over Georgia and beyond. Whatever your cattle needs — a top herd bull, a replacement heifer, a productive brood cow or a fancy heifer for the Junior Show Circuit — give us a call and come by for some real Southern hospitality.

Sam & Pat Zemurray • 477 Honeyridge Rd.
 Guyton, GA 31312 • Office 912.772.3118
 Home 912.234.7430 • Fax 912.772.3613

HoneyRidge
 Plantation

J. Taylor Neighbors POLLED HEREFORDS

525 District Line Road
 Americus, Georgia 31709
 Email: royboyjt@bellsouth.net
 Res. 229-924-0091
 Office 229-924-6997

DOUBLE (BB) FARM Registered Polled Herefords

Cows & Bulls
 For Sale at
 Private Treaty



Herd Certified
 and Accredited
 No. 127

Bobby Brantley
 1750 Wommack-Brantley Rd. • Tennille, GA 31089
 Cell 478-553-8598 • Home 478-552-9328
 doublebfarm@washemc.net



Building a Solid Breeding Program
 6062 Jefferson Rd. • Commerce, GA 30529
 Office 706-335-2808 Home 706-335-6085

Fully Utilizing Pastures Key to Maximizing Beef Profits

By Wayne Tankersley

Someone once wisely said, *“the cheapest land you’ll ever buy is increasing the utilization of your own.”* But how is this done? Read on to explore strategies cattle producers can employ to increase productivity of existing pastures.

Strategy #1 – Use improved forage varieties. In Georgia and the lower Southeast, we have three primary base forages – fescue, bermuda and bahia. In recent years, new higher yielding varieties of these forages have been released that give greater animal performance. Extensive research has shown non-toxic *Jesup MaxQ fescue provides significant improvement in stocker gains, calf weaning weights and animal health over toxic Ky 31 while offering the same plant persistence and hardiness. New varieties of hybrid bermuda like Russell and Tifton 85 are higher yielding and more digestible than earlier released varieties. Improved seeded bermuda varieties and blends such as *Cheyenne and *Ranchero Frio offer substantially more production than common bermuda. Among bahia varieties, Tifton 9 clearly offers production advantages.

Strategy #2 – Add clover. Studies throughout the Southeast have shown significant increases in cattle gain when clover is added to permanent pastures. In addition, a good stand of clover (30-35% based coverage) can provide 100 lbs/A or more nitrogen, thus reducing the need for purchased nitrogen fertilizer. The introduction of two new highly persistent clover varieties – *Durana and *Patriot – and the high cost of nitrogen fertilizer has renewed interest in clover utilization.

Strategy #3 – Maintain soil fertility. Soil pH is critical. Maximum plant uptake of N, P & K occurs when the soil pH is between 6.0 & 6.8. Also, remember all nutrients are essential for optimizing plant growth and survival. Pay particular attention to soil potassium levels. Low potassium levels can result in poor yields, increased disease susceptibility and higher plant mortality.

Strategy #4 – Utilize proper grazing management. In general, a good pasture will support one cow/calf pair per 1.5 to 2 acres. Studies across the U.S. have shown beef stocking rates can be increased 25%- 35% when a “residue and rest” or “rotational grazing” system is utilized. An added benefit of such a grazing system is improved forage vigor, quality and persistence.

Strategy #5 – Control weeds. Weeds rob pasture forages of nutrients and moisture, provide unnecessary competition and lowers overall pasture quality and productivity. Weeds can be controlled mechanically or chemically. However, the cheapest and easiest way to prevent weed competition is to maintain a good stand of desirable grass. This is accomplished by employing proper fertilization and grazing management practices.

Strategy #6 – Overseed annuals. Overseeding high quality winter annuals such as rye, wheat, oats and ryegrass on warm season perennial pastures extends pasture production into more months and reduces the need for purchased and/or stored winter feed supplies.

Beef producers who remain profitable in the future will be those that utilize management techniques as described above to maximize utilization of every acre.

Jesup MaxQ, Durana, Patriot, Cheyenne and Ranchero Frio are marketed by Pennington Seed, Inc. For more info or for a dealer near you, visit our website at www.penningtonseed.com or call 1-800-285-SEED.

(Wayne Tankersley is a retired UGA Extension Agent. He operates a commercial beef cattle farm and works as a forage consultant.)

Quality isn't the exception, it's the essential!



Anderson Polled Hereford Farm

1150 Dent Road • Odum, GA 31555

Chris Anderson

(912) 586-6004 Cell (912) 269-8003

E-mail: andersonfarm@hotmail.com

GRIFFIN HILLS FARM



POLLED HEREFORDS

2186 Gum Creek Road
Oxford, GA 30054

Donald R. Griffin • (770) 786-7868
E-mail: griffinhills@worldnet.att.net

Phone
(706) 484-1799



Phone
(770) 786-7868

BAILES RANCH

Pete & Shirley Bailes

301 Dennis Station Rd., SW
Eatonton, Georgia 31024

Johnson Polled Herefords

Registered Polled Herefords
Thomas R. Johnson, Owner



7731 Bastenville Road
Warrenton, Georgia 30828
Home: 706-465-2421 • Pager: 1-888-814-3068



GHA Member Web Page and E-Mail Address

Apple Valley Farm – Bill Sims
E-mail: bsimsins@alltel.net

Cherry Ridge Farms – Ricky Yarbrough
Web Site: www.cherryridgefarms.com
E-mail: cherry_ridge@cattle-today.com

Georgia Hereford Association
Ricky Yarbrough, Site Manager, 478-986-5304
Web Site: www.georgiahereford.org

Hill-View Farm – Bud Hill
Web Site: www.hillvuefarm.com
E-mail: bud@hillvuefarm.com

JWR Land and Cattle – Wesley Rakestraw
Web Site: www.jwrlandandcattle.com
E-mail: jwrlandandcattle@aol.com

Leonard Polled Herefords – Sherman Leonard
Web Site: http://www.lphfarm.com
E-mail: herefords@alltel.net

Mead Cattle Enterprises – Tommy Mead
Web Site: www.meadcattle.com
E-mail: meadcattle@jeffersonenergy.com

Kay McCurdy
E-mail: herefords@alltel.net

Moore Farms – Terry Moore
Web Site: http://www.moorefarms.net
E-mail: terry@moorefarms.net

Stonegate Farm – Bob Neligan
E-mail: bobneligan@yahoo.com

..... **CALENDAR OF EVENTS**

December 2, 2006 Whaley Polled Herefords
"An Affair to Remember"
Dalton, GA

December 9, 2006 South Carolina Polled Hereford
Association Sale
Clemson Univ. Clemson, SC



MALCOLM FINANCIAL GROUP

"Since 1974"

B. Frank Malcolm, Sr., CLU
GCA Member
(Piedmont & Morgan)

- Estate, Financial and Eldercare Planning
- Complimentary Financial Profile Available to GCA Members

"Folks don't plan to fail, but many fail to plan."
www.georgiaretirementcouncil.com

Office: **770-786-4820** Cell: **770-598-7192**
(Available for a limited number of programs in 2006.)
Contact Frank Malcolm at 770-786-4820, cell 770-598-7192,
or Bill Sims at 706-335-2808, cell 706-614-1255.

Make Plans to Attend!

South Carolina **HEREFORD SALE**

VIEW THE CATTLE
December 8, 2006

SALE
December 9, 2006

SELLING 50 LOTS • 12:00 NOON

Clemson University
CLEMSON, SC

AT THE ED GARRISON ARENA

For catalogs contact Dale Stith, (918) 760-1550
E-mail: drstith@knology.net

GEORGIA HEREFORD ASSOCIATION

Hall of Fame

Guidelines for Nominations:

- Must have been a member of State Association for a minimum of five years.
- Letter of nomination from two Georgia Hereford Association members.
- Completion of recommendations form listing nominee's accomplishments.
- Review of nominations and selection of honoree will be made by committee of State Association President, Board member, and one Association member.
- Nominations must be made by December 31 each year to be recognized at annual meeting.

Nominees will be recognized at annual meeting in April. Name will be placed on Hall of Fame Plaque displayed at the State Cattleman Building. In addition, a plaque will be given to recipient.

I would like to nominate _____ into the Georgia Hereford Association

Hall of Fame for the year _____. The reasons that I feel _____ should be considered are:

- _____
- _____
- _____
- _____
- _____
- _____
- _____

_____ has been a member of the Georgia Hereford Association for _____ years and has benefitted the Association by: _____

Feel free to use additional sheets and attach to this form.

**Nomination form is due by December 31st to: Ray Hicks
660 Seaburn Vickery Road
Statesboro, GA 30461**

Make Plans to Consign Cattle Starting Today!

Georgia Hereford Sale



Consignments Needed!

APRIL 5, 6, 7, 2007

Contact Sale Committee to Consign Cattle

Tommy Mead, Cell 706-339-0201

Billy Martin, Cell 404-376-6414

Taylor Neighbors, Cell 229-924-0091

REPRODUCTIVE PROGRESS

Embryo Transfer Service

On-Farm Semen Collection
Pregnancy Ultrasounding
Sexing Pregnancies



Embryos and Semen For Sale
Synchronization and Breeding
Semen Testing Bulls

RUSS PAGE, PhD.
(706) 796-0797

www.reproductiveprogress.com

1210 Sunset Ridge
Watkinsville, GA 30677



WELTY'S CATTLE SERVICES

Lucian and Pearl Welty
1203 Ethridge Mill Rd.
Griffin, GA 30224
Phone (770) 228-4445
FAX (770) 228-4499

Consulting • Marketing • Purchasing • Photography • Ring Service

Contact Bill Sims concerning advertising in Georgia Hereford Newsletter at 706-335-2808 or 706-335-6085.



ADVERTISING RATES

	1 Issue	4 Issues Contract
1 PAGE	\$180	\$150
1/2 PAGE	96	80
1/4 PAGE	60	50
COLUMN INCH	15	12
COLOR 1 PAGE....	350	

PUBLICATION DEADLINES

February 1 • May 1 • August 1 • November 1

Newsletter mailed approximately three weeks after deadline.



Membership Information

Membership in the Georgia Hereford Association is on an annual basis, July 1 through June 30 each year. New members who join after March 31 each year will be credited with a full year's membership plus the remaining time in the current year.

Benefits in GHA membership include: (1) the opportunity to consign cattle to association consignment sales; (2) receiving information about shows and field days sponsored by GHA; (3) receiving a quarterly newsletter updating activity of GHA and its members; (4) having your Polled Hereford operation listed in the GHA biennial directory at no additional cost; (5) entering cattle in GHA shows; and (6) supporting an organized effort to promote Polled Hereford

cattle. In addition, you will be able to make new friends and learn what others are doing by attending the various activities such as sales, shows and field day.

GHA is a registered non-profit Georgia Corporation. A copy of the by-laws is available to anyone interested in joining the association. The association has been active since 1968.

Two affiliated groups of GHA are the Georgia Poll-ettes (the ladies support group) and the Georgia Junior Polled Hereford group.

To Join, complete the form below checking the category in which you desire membership.

GEORGIA HEREFORD ASSOCIATION MEMBERSHIP FORM

Name _____

Telephone _____

Mailing Address _____

City _____ State _____ Zip _____

Farm Name (if appropriate) _____

Address (if different) _____

City _____ State _____ Zip _____

Types of Membership: (Please check desired membership.)

Registered Breeder \$35.00

Commercial Breeder \$20.00

Poll-ettes (Ladies Support Group)..... \$10.00

Junior Membership (Up to Age 21).....\$ 5.00

Give birthdate of Junior _____

SEND COMPLETED FORM WITH REMITTANCE TO:

GHA

660 SEABURN VICKERY RD.
STATESBORO, GA 30461

Georgia Hereford Association Membership List

George A. Allen
864 Hardman Hooper Rd., Hull, GA 30646

Emory "Pete" Bailes
301 Dennis Station Rd., Eatonton, GA 31024

Stan & Denise Bartles
3525 Mistletoe Rd., Appling, GA 30802

Reggie & Allison Beasley
466 Old Spivey Rd., Jesup, GA 31545

Hans Branham
307 Howe Valley Rd., Cecilia, KY 42724

Jack Brannen
1550 P.B. Brannen Rd., Statesboro, GA 30458

Bobby Brantley
1750 Wommack Brantley Rd., Tennille, GA 31089

Robert Brooks
1158 Bishop Cary Rd., Danielsville, GA 30611

Glenn Cathey
Rt. 1 Box 108 R, Nahunta, GA 31553

C. Porter Claxton
240 Upper Flat Creek, Weaverville, NC 28787

Jerry Chambliss
1425 Graves Hwy., Dawson, GA 39842

Alvin, Kathy, Kim Chastain
357 Collins Dudley Rd., Danielsville, GA 30633

William L. (Roy) Clarke
2879 Dekle Rd., Register, GA 30452

Leo & Allene Corley
P.O. Box 127, Williamson, GA 30292

Payton Crawford
P.O. Box 1804, Americus, GA 31709

Charles Davidson & Sons
13027 177th Rd., Live Oak, FL 32060

Ed & Deloris Davidson
P.O. Box 275, Senoia, GA 30276

Mrs. Snead Davis
29210 NW 122nd St., Alachua, FL 32615

Barry Deas
4052 Windmill Rd., Manor, GA 31550

Roy Dobbs
11101 Hwy. 53 W., Talking Rock, GA 30175

Glenn S. Duncan, III
1397 Manley Rd., Griffin, GA 30223

Eddie & Rhonda Duncan
1245 Milligan Creek Rd., Roopville, GA 30170

Dale M. Dylong
1140 Gum Creek Rd., Oxford, GA 30054

Bryan Ashley Edenfield
471 Honey Ridge Rd., Guyton, GA 31312

David & Debra Fordham
Rt. 2 Box 195, Metter, GA 30439

Earl Forrest
101-103 N. Main St., Saluda, SC 29138

Robert Q. Fountain, Jr.
P.O. Box 167, Adrian, GA 31002

Frostproof Chapter FFA
1000 North Palm Ave., Frostproof, FL 33843

L. Tom Gay
860 Powers Lake Dr. NW, Atlanta GA 30327

Kyle Gillooly
2731 River Rd., Wadley, GA 30477

Glenview Farms, LLC
Shinglehouse, PA

James L. Jimmy Gillis, III
P.O. Box 456, Soperton, GA 30457

Joan N. Grantham
Rt.2, Box 33, Cochran, GA 31014

Donald R. Griffin
2186 Gum Creek Rd., Oxford, GA 30054

Winton & Emily Harris
2121 K-Ville Rd., Screven, GA 31560

Chris Heidt
2756 Springfield Egypt Rd., Springfield, GA 31329

Philip M. Heidt
2954 Springfield Egypt Rd., Springfield, GA 31329

Adam Henderson
4000 Manor Millwood Rd. S., Manor, GA 31550

Richard T. Henderson
6570 AP Henderson Rd., Manor, GA 31550

Jimmy Herrin
3940 Fence Road, Auburn, GA 30011

Ray, Debbie, Carole Hicks
660 Seaburn Vickery Rd., Statesboro, GA 30461

Darrell Hicks
3853 County Rd. 781, Cullman, AL 35055

Michael O. Hightower
1290 Kelleytown Rd., McDonough, GA 30252

C. W. "Bud" Hill, Jr.
1651 Deep South Rd., Blairsville, GA 30512

Whitey & Weyman Hunt
P.O. Box 488, Madison, GA 30650

J.E. Jeanes Family
2047 Hwy. 18 E., Macon, GA 31217

J & J Farms
3543 Hwy. 112 N., Whigham, GA 39897

Annette B. Johnson
P.O. Box 60, Clinchfield, GA 31013

Herschel Johnson
400 Smokey Rd., Newnan, GA 30263

Ronnie & Teresa Johnson
3362 Haley Farm Rd., Canton, GA 30115

Thomas & Kathy Johnson
7731 Bastonville Rd., Warrenton, GA 30828

Larry Jones
846 Cornelison Rd., SE, Rydal, GA 30171

Joe & Catherine Kassler
4810 Smokey Rd., Newnan, GA 30263

Komip Ranch
8640 Anchor on Lanier Ct., Gainesville, GA 30506

Lee Lancaster
14 North Cook St., Milan, GA 31060

Ronnie Lancaster
14 North Cook St., Milan, GA 31060

Frank Lane
107 Harman Lane, Carrollton, GA 30117

M. B. Lane, Jr.
404 Lane Rd., Carrollton, GA 30117

Otis L. Leonard
148 Hwy. 9, Kellyton, AL 35089

Sherman Leonard
P.O. Box 280, Chatsworth, GA 30705

Ed Loitz
5610 Halcyondale Rd., Sylvania, GA 30467

Steve Marshall
8110 Knoxville Rd., Lizella, GA 31052

Billy Martin
1359 County Line Rd., Cumming, GA 30040

Don McCurdy
1284 New Hope Rd., Chatsworth, GA 30705

Angie McDaniel
P.O. Box 88, Brookfield, GA 31794

Richard McGinnis
2810 Macedonia Church Rd., Danielsville, GA 30633

William "Bill" McIlrath
P.O. Box 13039, Savannah, GA 31416

Thomas H. "Tommy" Mead
1222 Reeves Rd., Midville, GA 30441

Terry Moore
499 Pulaski High Rd., Pineview, GA 31071

Phil & Loy Mullinax
1289 South Main St., Jasper, GA 30143

Robert F. Murray
129 Ford St., Canton, NC 28716

Jesse Muse
4461 S. Hickory Level Rd., Carrollton, GA 30116

J. Taylor Neighbors
525 District Line Rd., Americus, GA 31709

Patrick Neligan
4736 Milledgeville Rd., Eatonton, GA 31024

Bob Neligan
485 Milledgeville Rd., Eatonton, GA 31024

Mallie Norman
184 Mallie Norman Lane, Moultrie, GA 31768

James Franklin O'Neal
1670 Bud Jordan Rd., Uvalda, GA 30473

Judy Parham
1090 Lowe Rd., Comer, GA 30629

Douglas B. Patton
461 Kirk Langford Rd., Danielsville, GA 30633

Walter & Debbie Pease
4305 Mallard Pond Rd., Statesboro, GA 30458

Mike Peppers
966 Horseleg Creek Rd., Rome, GA 30165

Steven & Michelle Peskoe
3033 Freetown Road, Sandersville, GA 31082

Dennis Pope
2120 Aaron Station Rd., Portal, GA 30450

Wesley Rakestraw
401 Butler Ind. Dr., Dallas, GA 30132

Michael D. Raulerson
2000 Briar Creek Rd., Pierson, FL 32180

James T. "Mike" Richards
225 McClure Rd., Anderson, SC 29626

Seth Ridley
130 Dogwood Circle, Chatsworth, GA 30705

Donald T. Ritchie
141 Plemons Rd., Crandall, GA 30711

Steve & Elaine Roberts
Rt. 1 Box 4260, Alapaha, GA 31622

Randy Roberts
296 Bud Hutcheson Rd., Douglas, GA 31535

Roy N. Roberts
54 Nunnally Farm Rd., Monroe, GA 30655

Olive & Roby Robinson
400 Dorris Rd., Alpharetta, GA 30004

William "Bill" Sims
6062 Jefferson Rd., Commerce, GA 30529

Charles Smith
1095 Charles Smith Rd., Wadley, GA 30477

J. Paul Smith
1701 Snows Mill Rd., Bogart, GA 30622

Diann & Waunell Strickland
P.O. Box 128, Mershon, GA 30551

A. Wayne Talton
2724 Hwy. 127, Kathleen, GA 31047

Ryan W. Talton
200 Deer Parkway, Athens, GA 30605

Frank H. Thomas
Rt 1, Box 40, Alamo, GA 30411

James Thompson
1968 Burton's Ferry Hwy., Sylvania, GA 30467

Reggie & Marsha Tisdale
P.O. Box 849, Sorrento, FL 32776

Roy C. Tomazin
P.O. Box 67, Register, GA 30452

J. Edward Trice, Jr.
P.O. Box 141, Thomaston, GA 30286

Lucian Welty
1203 Ethridge Mill Rd., Griffin, GA 30224

Truman & Starr Whaley
2634 Riverbend Rd., Dalton, GA 30721

Jimmy L. Williams
731 Three Path Rd., Rocky Ford, GA 30455

John Williams
385 Sweetwater Rd., N. Augusta, SC 29860

Lonnie L. Williamson
106 Crooked Creek Ln., Athens, GA 30607

Danny Worsham
1659 Jeffersonville Rd., Macon, GA 31217

Ricky WORSHAM
4188 Sgoda Rd., Macon, GA 31217

James WORSHAM
16210 Ga. Hwy. 129, Macon, GA 31017

Thomas Ricky Yarbrough
P.O. Box 426, Gray, GA 31032

Sam & Pat Zemurray
One Lattimore Place, Savannah, GA 31405

Dustin Layton
16400 Seminole Dr., Edmond, OK 73013

