



# GEORGIA • HEREFORD • ASSOCIATION NEWSLETTER

FEBRUARY 2006

## GHA SPOTLIGHT:

# The Ronnie Lancaster Family



Located half way between Milan and Chauncey is a small family farm that's owned by the Lancaster Family. Ronnie and Elaine bought 57 acres in 1978 that joined 28 acres his mother inherited from her father. Ronnie was later given that 28 acres to make a total of 85 acres in the operation. The fences were either down or non-existent when Ronnie took over.

Ronnie wanted some cows, so in 1984, he bought six heifers on credit from Mr. E. C. Jones (Ronnie's uncle). They paid for the heifers that Fall after selling their peanuts. These heifers were sired by an Enforcer 107H son, J56. They were also grand daughters of RWJ Victor J3 212. Their first herd sire, bought in 1985, was a son of C&H Grand Slam which they bought from Cliff and Howard Sheppard. He remained herd sire until 1995. Ronnie said, "That bull made me more money than any other bull I ever used."

In 1986, six more heifers were purchased from Hollywood Farms (Dr. Duggan) but they were bred by E. C. Jones. They were also granddaughters of Enforcer, a half brother to J56.

During this period, Ronnie and Elaine were busy building fences, shelters and repairing a couple of old buildings that were in disrepair. The old farmstead house was torn down and part of the lumber used to make repairs. This was a busy time trying to get the farm in shape to best utilize the small acreage they had. They put in pasture grass (Bahia) and Alicia Bermuda for hay.

From the early 1990s to the present, Ronnie has added from time to time a few cows from other breeders. Some of the breeders that Ronnie bought from are: J. L. Hadden & Sons, Mitch Worsham, CES Polled Herefords, HoneyRidge Plantation and various consignors to the Georgia Hereford Spring Sale. A cow has to wean a good calf every year in order to remain in



*Ronnie and Elaine Lancaster with children and grandchildren.*

the Lancaster herd.

Ronnie has 20 acres in Bahia grass, nine acres in Alicia Bermuda grass and 30 acres for temporary grazing. He uses oats in the Winter and millet in the Summer. He limit grazes the temporary pasture to get better utilization of the forage. He has an underground irrigation line run the length of his place with risers evenly spaced that allows him to irrigate all his open land with a traveler gun.

Calving season begins in January and ends in late March. The cows are kept on the Bahia pasture with hay and minerals until they calve. When the calf is a day or so old, the pair is move to

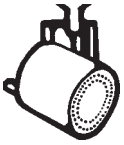
**(Continued on Page 2)**



*Lancaster bull.*



*Mama Herefords in the Landcaster herd.*



## GHA Spotlight ...

(Continued from Page 1)

another area so they can graze the oats each day for a short time.

The bull calves are cut unless one is an outstanding calf. The steers are sold through the local auction and the heifers are sold private treaty except the few that are retained for replacements.

Ronnie says that his uncle E. C. Jones had a great deal of influence on him and his getting started in the Hereford breed of cows. He still has some descendants of those first heifers he bought from Mr. Jones.

Ronnie with son Lee and son-in-law Clint do all the work while holding other jobs. Ronnie hauls lime and other products with his 18-wheeler. Lee is an Agricultural Sanitarian with the Georgia



Weaned calves that will be bred this year for replacements.

## Greetings from the Barn Lot



By Ray Hicks, GHA President

Where does the time go? I had made a New Year's resolution that I was going to stay caught up on all my duties. My desk was going to stay clean, my messages answered on time, and a little time to relax. Was I ever wrong!

Hopefully, this New Year finds you with one of the best calf crops on the ground in a while. I know here at the Hicks Ranch we have had a good run with a mix of both bulls and heifers. And just when I think the barn can stay empty for a few months, Deb and Carole have started this year's babies.

Please remember that our Georgia Beef Expo is coming up on April 7 and 8 at Perry. We will induct our next honoree into the Georgia Hereford Hall of Fame on Friday afternoon, followed by our annual meeting and banquet that night. Then on Saturday, April 8, an outstanding group of cattle will be offered at our Association Sale. Please make plans to attend both of these events. At our annual meeting we will be auctioning pages for the new directory and also electing some new board members.

Summer is just around the corner and I know that my bahia grass has already started to green up. Hope to see you at the sales and shows.

Still trying to catch up!



Heifers.

Department of Agriculture. Ronda (their daughter) is a speech therapist at T. G. Scott Elementary School in Monroe County. Clint Sanders (son-in-law) teaches math at Mary Parsons High School in Monroe County. Clint was born and raised on a dairy farm in Monroe County and says he likes being involved with the cows and farm but glad he doesn't have to milk twice a day.

Clint and Ronda have three children William, 9; Heath, 3 1/2 and Elizabeth, 15 months. Lee is still single. Most every Saturday you can find the entire family at the farm. They have an old log crib that Lee and his buddies help Ronnie move and restore so they would have a place to "hang out." It is filled with old "stuff" that bring back memories to us old timers.

Elaine works in her family's Milan Tractor and Implement Company, which was a John Deere Dealership until 1990. She helped her mother run the parts department and do whatever else needed doing. Mrs. Knowles helped many "old farmers" get the right part by just looking at the broken piece or have the person describe what they needed. She had a tremendous parts number filing system in her head. Regrettably, she lost a long battle to cancer in 1991. Even though the John Deere dealership is gone, Elaine still handles the day to day management of Milan Tractor and Implement Co.

When you wish to see a working family farm, just visit with Ronnie and Elaine. The farm doesn't pay all the families' bills but it provides them with a good family life. They would enjoy your visit, but bring your working clothes because you may need them.

(If you have access to the *GEMC Georgia Magazine*, look in the January, 2006 issue, page 34. Elaine's sister, Faye, gives you a glimpse of Elaine's life in her younger days as she tells about John Deere Day in Milan.)

### GEORGIA HEREFORD ASSOCIATION OFFICERS

#### President

Ray Hicks  
660 Seaburn Vickery Rd.  
Statesboro, GA 30461  
912-865-5593

#### Vice President

Tommy Mead  
1222 Reeves Rd.  
Midville, GA 30441  
706-554-6107

#### Secretary-Treasurer

Frank Thomas  
Rt. 1, Box 40  
Alamo, GA 30411  
912-568-7743

#### DIRECTORS

Ricky Yarbrough  
P.O. Box 426  
Gray, GA 31032  
478-986-5034

Roy Dobbs  
11101 Hwy. 53 W.  
Talking, Rock, GA 30175  
706-692-3702

Chris Anderson  
1150 Dent Rd.  
Odum, GA 31555  
912-262-1852

Bill Sims  
6062 Jefferson Rd.  
Commerce, GA 30529  
706-335-6085

Billy Martin  
1359 County Line Road  
Cummings, GA 30040  
404-376-6414

Taylor Neighbors  
525 District Line Road  
Americus, GA 31709  
229-924-0091  
229-924-6997

Bobby Brantley  
1750 Wommack Brantley Road  
Tennille, GA 31089  
478-552-9328

Whitey Hunt  
P.O. Box 488  
Madison, GA 30650  
706-342-0264

Randy Roberts  
296 Bud Hutcheson Road  
Douglas, GA 31535  
912-384-4349

# DOUBLE FARM



**WOW! What a Face!**

Hereford cattle for sale  
at Private Treaty

• • •

Herd certified  
and accredited.



Our Straight Victor Jr. herd sire by F211,  
DBF Rawhide 211 911P

See our entry in the  
Spring Hereford Sale  
at the  
Georgia Beef Expo  
in Perry, Georgia.

**Bobby & Carolyn Brantley**  
1750 Wommack Brantley Road • Tennille, GA 31089  
Phone 478-552-9328

Cell Phone 478-553-8598    [doublebfarm@washemc.net](mailto:doublebfarm@washemc.net)

Registered Herefords

**HoneyRidge**  
Plantation

Sam and Pat Zemurray

477 HoneyRidge Road • Guyton, GA 31312

Office (912) 772-3118

Night (912) 234-7430 Fax (912) 772-3614

**Moore Farms**

TERRY A. MOORE

Rt. 3, Box 5060 • Hawkinsville, GA 31036

Farm Phone (478) 892-3235

Pager (229) 879-3599

E-mail: [tmoorefarms@netscape.net](mailto:tmoorefarms@netscape.net)

**REGISTERED  
POLLED HEREFORDS**

Member, Georgia Cattleman's Association  
Member, Georgia Hereford Association

**J. Taylor Neighbors**

**POLLED HEREFORDS**

525 District Line Road  
Americus, Georgia 31709

Email: [royboyjt@bellsouth.net](mailto:royboyjt@bellsouth.net)

Res. 229-924-0091

Office 229-924-6997

# SEE OUR ENTRY AT THE TIFTON BULL TEST

**Presently ranking with the best!**

**We Were Pleased To Have The  
Top Index Hereford Bull At The  
Calhoun Bull Test Sale!**

More  
young bulls with these  
great genetics available at  
the farm.

Quality  
Herefords available at  
affordable prices.



Birk

**SSR LPH BANDIT 788 ET**

**Our herd sire of top selling Hereford Bull at Calhoun**

## **Sunset Ridge Farm**

1359 County Line Rd., Cumming, GA 30040 • Billy Martin, owner • 404-376-6414

# Poor Quality Forage Robs Genetic Potential

by Wayne Tankersley

When it comes to choosing breeding bulls and replacement seedstock, top cattle producers want to find the best genetics available. This often means devoting a great amount of time to studying, searching, traveling and most likely spending extra money to obtain cattle that will enhance the productivity of the operation. It is amazing to me how some producers will devote so much time, energy and money investing in top genetics and then place these superior cattle on poor quality or toxic pastures where their genetic potential cannot be captured.

No where is this more evident than with cattle being maintained on toxic fescue pastures. A study was initiated at the Northwest Georgia Branch Experiment Station in Calhoun, GA to compare performance of cows and calves maintained on non-toxic and toxic endophyte infected fescue pastures. In the study, cow/calf pairs were split into two even numbered groups. In early April, one group was placed on a toxic fescue pasture and the second group on a non-toxic **\*Jesup MaxQ** fescue pasture. Both groups remained on their respective pastures through calf weaning time in late August.



***“It makes little sense to invest heavily in improved animal genetics if the overall management system doesn’t allow those genetics to express themselves.”***

Over a three year period, cows maintained on non-toxic MaxQ pastures weaned steer calves that averaged 62 lbs./head/year more and heifer calves that averaged 44 lbs./head/year more than calves from cows grazing toxic fescue pastures. The genetics of the two groups were essentially the same. The only difference was the quality of the forage!

While improving animal genetics is important, this study strongly emphasizes it is equally or more important to invest some dollars in pasture forage improvement. If a certain bull could deliver an extra 40 lbs. on every calf weaned, a producer would no doubt be willing to invest thousands of dollars to obtain his genetics.

It makes little sense to invest heavily in improved animal genetics if the overall management system doesn’t allow those genetics to express themselves. Cattle experts will agree a key component of any cattle management system is providing adequate amounts of high quality pasture forage. Producers wanting to capture the full genetic potential of their cattle will wisely invest some time and money into providing and maintaining productive, high quality pastures.

*(Wayne Tankersley is a retired University of Georgia county extension agent. He owns and operates a commercial beef cattle farm and works as a private forage consultant.)*

**\*Jesup MaxQ was developed by the University of GA and AgResearch NZ and is marketed by Pennington Seed, Madison, GA. For information, call 1-800-285-SEED or visit the Pennington website at [www.penningtonseed.com](http://www.penningtonseed.com).**

## MaxQ vs. Toxic Fescue Cow-Calf Performance Calhoun, GA

MaxQ Advantage  
Steers - +62 lbs./head  
Heifers - + 44 lbs./head

Three year summary; 44 steers and 52  
heifers/group  
Watson et al., 2004

## National Polled Hereford Queen 2006

From Prairie Grove, Arkansas, the "Natural State", to the "Sooner State" as a college student, Miss Cassie Bacon is our new National Polled Hereford Queen for 2006. She had cried last year when she was selected first runner-up and she cried again this year – both years the tears were of joy and excitement.

Cassie is a freshman at Oklahoma State University and when she tells you she is working on a double major in Animal Science-Option Food Industry and Agricultural Communications with a minor in Agricultural Leadership and plans on getting a master in Meat Science, you had better listen closely! Cassie ranked first in her high school class with a 4.0 GPA and participated in numerous school activities including cheerleading, student council, FBLA and choir. In 4-H, on the national level, Cassie was second highest in reasons and ninth in beef at National Meats CDE and was a National Gold Rated Beef & Sheep Proficiency winner.

Cassie has been a member of the NJHA for 14 years and has participated in most all contests offered at the Junior National. She is a valuable director of the NJHA and is the reporter for 2005-2006. She won the Ed Bible, Poll-Ette Founders and Pro-Performance scholarships this year in Wisconsin. Her cattle are also as good as she is. At the 2005 Junior national, her heifer was a division winner in that very stiff competition.

"When I was a little girl attending National Polled Hereford shows, I dreamed of wearing a sash and a huge crown. As I got older, I realized that it's not just about the crown; it's about being a role model to others and promoting such a great breed of cattle. It is an honor to even be considered for such a great dream. Now the dream has come true and I am so honored and blessed to be named National Polled Hereford Queen."

We feel honored and blessed to have Cassie as our National Queen. Not only does she have a great smile but this is one intelligent young lady.



## FARM SIGNS AVAILABLE

3' x 5' Road Sign, One Side - \$175.00

18" x 24" Gate Sign, One Side - \$60.00

12" Stick on Screen, \$35.00

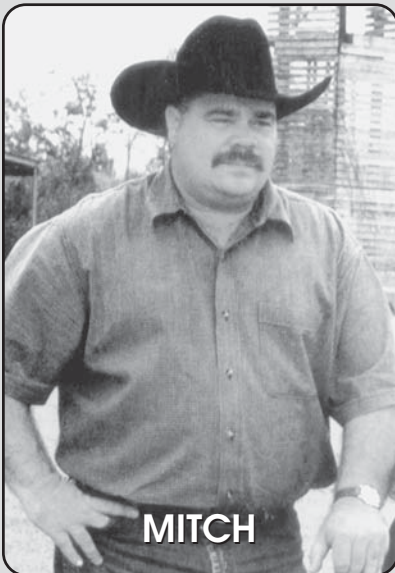
18" x 24" Hanging, Double Sign - \$95.00

Contact \_\_\_\_\_

Color Wheel Sign Co., 478-553-1600  
(Sandersville, GA 31082)

Bobby Brantley, 478-552-9328  
(Tennille, GA 31089)

Shipping cost will be added to all signs. Sign sales will be between Color Wheel and buyer. Checks should be made payable to Color Wheel Sign Co.



## We are carrying on Mitch's dream and goal!

### "The Duke"

Our Newest Herd Sire – HRP 212M Victor 431

#### Herd Sires:

WWC Victor 5129 53C

JLH Victor Y144A172

Cow Herd: Victor Domino

# WORSHAM CATTLE CO.

16210 Highway 129 • Macon, GA 31217 • (478) 745-6642

Jimmy, Mitch, Ricky, Jake, Levi

*Breeders of Hereford Cattle Since 1965*



# Our Own Debbie Pease Shines in Denver

Georgia Pollette of the Year, Debra Pease of Statesboro, recently traveled to Denver, Colorado to compete for the National Pollette of the Year. Debbie made all of us very proud when she captured first runner-up! She has worked so hard for the Georgia Pollettes for many years. She is currently serving as Secretary/Treasurer of our organization. In just the past two years, Debbie has started a quarterly newsletter that is mailed to each Pollette member and is putting together a cookbook for a Pollette fundraiser.



This past summer at the Junior National Hereford Expo, Debbie manned our Pollette booth that brought in over \$1,100.00 for our scholarship program. She also put together our silent auction that we held at Field Day. At the 2004 Junior National in Tunica, Debbie painted a Hereford picture that was raffled off at the end of the show. All of these proceeds went to the Georgia Pollettes for our youth programs.

Debbie and her husband Walter own Flag Pond Farm. Debra's involvement with the Georgia Pollette Association began when her children started showing cattle in 1993. When she was introduced to the Georgia Pollettes, she quickly learned how hard the Pollettes work for the benefit of the Junior programs.

Debbie has been able to tie Herefords to the local Kiwanis club with the livestock's program. Her Kiwanis club gives away six heifers each year. She has been involved with this the last several years.

Debbie is very honored to have been chosen the Georgia Pollette of the year as well as the 1st runner up. She feels that she is giving back what the Hereford Association has given her and her family. She said, "It has opened opportunities for my children that they would not have experienced otherwise."

The Georgia Pollettes are so honored to have Debbie Pease with her tireless dedication in our organization. Congratulations!!

## National Organization of Poll-ettes

By Dianne Peebles

100 years of Herefords at the National Western, how can you not be motivated when you see the great growth and opportunity our breed is experiencing. Our mission is promoting Polled Hereford cattle and supporting youth and their activities. I feel fortunate to working with a group of diverse and enthusiastic women that have come together to achieve our mission.

We had a great turn out for our Annual Meeting. I would like to thank the A.H.A. for the social and all the extras that made Denver a very special National. As the year goes, I cannot help but be thankful for Kelly Owen who helped our organization flourish. We are all grateful for her donations but mostly for her positive attitude, and her wonderful smile and giving nature have made her a great director, Chairman and Ex Officio. Thank you Kelly Owen.

Our board is very excited with getting a web page started and asking for your contributions in information. We are selling tickets for a whole house of floorcovering valued at \$2500. The drawing will be at the Junior National in Louisville this summer. Ask your director for information and to purchase a \$5 ticket.

# Georgia Poll-ettes

CONGRATULATIONS to Debbie Pease!!!! Debbie was named 1st runner up in the National Poll-ettes of the Year contest in Denver in January. The contest is sponsored by the National Organization of Poll-ettes and recognizes outstanding state Poll-ettes members. Debbie is a workaholic in the Georgia Poll-ettes. She makes many of our bestselling fund raiser items, including the studded cow!



It is that time again! The Georgia Poll-ettes will be have a hospitality booth at the upcoming Beef Expo, on April 7 and 8, 2006, in Perry. Please make plans to attend and bring your favorite snack. It can be chips, cookies, peanuts, fruit, etc. We will be providing tea, lemonade, and snacks for people attending the Expo.

We will need ladies to help serve. I will be counting on you!!!!

The Poll-ettes will be selling mouse pads, rugs, blankets, car mats, stuffed cows, note cards, and our new cookbook. This will be a good time to purchase items for Mother's Day, Father's Day, and upcoming birthdays.

Scholarship and Queen application's are due June 1. Please contact me for an application if you have a junior member interested in applying for the \$1000 scholarship or serving as Queen for the coming year.

Please be thinking about our officers and directors for next year. We need ladies who are committed to our organization and willing to serve by giving of their time.

I have received several thank you notes from state queens for our contribution to the national queen program. We contribute the national queen crown each year.

Spring will soon arrive! Hope yours is a happy time!!!!

## ATTENTION: Georgia Junior Hereford Association Members

Several scholarships will be given away this summer at the GHA Field Day in June. Each scholarship will be awarded to a Georgia Junior Hereford Association member that will be attending college in the fall of 2006.

You may download a scholarship application at [www.georgiahereford.org/scholarship.html](http://www.georgiahereford.org/scholarship.html) and then mail the completed application to Diann Strickland, P.O. Box 128, Mershon, GA 31551-0128. All applications must be postmarked no later than JUNE 1, 2006.

## Thank You Note

My family and I want to thank each of you for the cards, the phone calls, and most importantly, the prayers during Dad's surgery and recovery. He is truly a miracle and God deserves all the glory. As most of you know, he had five bypasses on January 10. It was a shock to us all. Dad is recovering extremely well. He has gone back to work almost full time and is at the barn every day (no manual labor – doctors orders). He is attending cardiac rehabilitation three times per week which is helping him regain his strength tremendously.

You will never know how much each phone call and card has meant to him. His Hereford friends have helped him through this difficult time and we owe you our gratitude. God has blessed him with the friendship of each of you. Please continue to pray for his recovery.

Thank you,  
Kay McCurdy and the Leonard Family



Mr. and Mrs. John Earl (Shirleen) Strickland  
 announce the marriage of their daughter  
 Betsy Waunell  
 to  
 Mr. Lance E. Davis  
 son of  
 Mr. and Mrs. Jacob L. (Janice) Davis III  
 on Saturday, February 25, 2006  
 at five o'clock in the evening  
 at the home of the bride's parents  
 2763 Walkerville Road  
 Blackshear, Georgia

**REPRODUCTIVE PROGRESS**  
**Embryo Transfer Service**  
 On-Farm Semen Collection  
 Pregnancy Ultrasounding  
 Sexing Pregnancies  
 Embryos and Semen For Sale  
 Synchronization and Breeding  
 Semen Testing Bulls  
  
**RUSS PAGE, PhD.**  
 (706) 796-0797 www.reproductiveprogress.com **1210 Sunset Ridge**  
**Watkinsville, GA 30677**

**WC**  
**WELTY'S CATTLE SERVICES**  
 Consulting • Marketing • Purchasing • Photography • Ring Service  
 Lucian and Pearl Welty  
 1203 Ethridge Mill Rd.  
 Griffin, GA 30224  
 Phone (770) 228-4445  
 FAX (770) 228-4499

Contact Bill Sims concerning advertising in Georgia  
 Hereford Newsletter at 706-335-2808 or 706-335-6085.

**ADVERTISING RATES**

|                   | 1 Issue | 4 Issues Contract |
|-------------------|---------|-------------------|
| 1 PAGE .....      | \$180   | \$150             |
| 1/2 PAGE .....    | 96      | 80                |
| 1/4 PAGE .....    | 60      | 50                |
| COLUMN INCH ..... | 15      | 12                |
| COLOR 1 PAGE....  | 350     |                   |

**PUBLICATION DEADLINES**  
 February 1 • May 1 • August 1 • November 1  
 Newsletter mailed approximately three weeks after deadline.

*Working Together...*



Dear GHA Members,  
 This is an opportunity for members of the Georgia Hereford Association to advertise what cattle they have for sale free of charge. We will be running this ad again in April 2006. Get your ads ready. Also, a reminder that the GEORGIA CATTLEMAN'S MAGAZINE has been working with GHA to provide a discounted cost for advertising. Please contact Bill Martin at home (770) 886-6849, cell (404) 376-6414.  
 Working together makes our association and our Hereford breed stronger. Encourage other Hereford breeders to join the Georgia Hereford Association.

*...to Promote Hereford Cattle*



*Membership Information*

Membership in the Georgia Hereford Association is on an annual basis, July 1 through June 30 each year. New members who join after March 31 each year will be credited with a full year's membership plus the remaining time in the current year.

Benefits in GHA membership include: (1) the opportunity to consign cattle to association consignment sales; (2) receiving information about shows and field days sponsored by GHA; (3) receiving a quarterly newsletter updating activity of GHA and its members; (4) having your Polled Hereford operation listed in the GHA biennial directory at no additional cost; (5) entering cattle in GHA shows; and (6) supporting an organized effort to promote Polled Hereford

cattle. In addition, you will be able to make new friends and learn what others are doing by attending the various activities such as sales, shows and field day.

GHA is a registered non-profit Georgia Corporation. A copy of the by-laws is available to anyone interested in joining the association. The association has been active since 1968.

Two affiliated groups of GHA are the Georgia Poll-ettes (the ladies support group) and the Georgia Junior Polled Hereford group.

*To Join,* complete the form below checking the category in which you desire membership.

**GEORGIA HEREFORD ASSOCIATION MEMBERSHIP FORM**

Name \_\_\_\_\_  
 Telephone \_\_\_\_\_  
 Mailing Address \_\_\_\_\_  
 City \_\_\_\_\_ State \_\_\_\_\_ Zip \_\_\_\_\_  
 Farm Name (if appropriate) \_\_\_\_\_  
 Address (if different) \_\_\_\_\_  
 City \_\_\_\_\_ State \_\_\_\_\_ Zip \_\_\_\_\_

**Types of Membership:** (Please check desired membership.)  
 Registered Breeder ..... \$35.00   
 Commercial Breeder ..... \$20.00   
 Poll-ettes (Ladies Support Group)..... \$10.00   
 Junior Membership (Up to Age 21).....\$ 5.00   
 Give birthdate of Junior \_\_\_\_\_

SEND COMPLETED FORM WITH REMITTANCE TO:

**GHA**

ROUTE 1, BOX 40 • ALAMO, GA 30411

# GEORGIA HEREFORD SALE

••• POLLED & HORNED •••



**April 8, 2006 • noon**

To be held at the Georgia National Fairgrounds & Agricenter  
Perry, Georgia

**Approximately 50 lots**

*11 Open Heifers, 11 Bred Heifers,  
17 pairs, 4 Herd Bulls, 6 Bred Cows,  
1 Embryo Package*

Join us Friday evening  
for a Dutch Treat Buffet  
at 7:00 p.m. in the  
Roquemore Building on  
the Fairgrounds, followed  
by guest speaker Carey  
Knowles, southern  
humorist.

**Auctioneer:**

CARROLL T. CANNON  
LICENSE #249

**Sale Day Phone:**

706-339-0201

**Ringmen:**

Lucian Welty      Dustin Layton  
770-228-4445      706-614-9518

For a sale catalog or further information, contact:

Tommy Mead

1222 Reeves Road, Midville, Georgia 30441

Office: 706-554-6107

## CONSIGNORS

**Tommy & Kathy Johnson**  
Johnson Polled Herefords  
Warrenton, Georgia • 706-465-2421

**Dr. John Williams**  
White Columns Farm  
North Augusta, SC • 803-279-0641

**J. Taylor Neighbors**  
Americus, GA • 229-924-0091

**Bobby & Carolyn Brantley**  
Double B Farm  
Tennille, Georgia • 478-552-9328

**Randy Roberts**  
Four R Farms  
Douglas, Georgia • 912-384-4349

**Joe & Catherine Kassler**  
The Oaks Farm  
Newnan, Georgia • 770-251-6522

**Sam & Pat ZeMurray**  
Honey Ridge Plantation  
Guyton, Georgia • 912-772-3118

**Jennifer Ratts**  
J & J Farms  
Whigham, Georgia • 229-377-3515

**M.B. & Joyce Lane**  
Mel Joy Ranch  
Carrollton, Georgia • 770-854-4548

**Tom & Olga Gay**  
Springlake Farm  
Monticello, Georgia • 404-252-9152

**Bethesda Home for Boys**  
Savannah, Georgia • 912-351-2043

**Frank Thomas**  
Powerline Polled Herefords  
Alamo, Georgia • 912-568-7743

**Bill Sims**  
Apple Valley Farm  
Commerce, Georgia • 706-335-2808

**Truman & Starr Whaley**  
Whaley Polled Herefords  
Dalton, Georgia • 706-277-3993

**Georgia Jr. Hereford Association**

**Massey Booth**  
Glenview Farms LLC  
Shinglehouse, PA • 814-697-6339

**Clayton Wright**  
Komip Ranch  
Dawsonville, Georgia • 770-565-9280

**Billy Martin**  
Sunset Ridge Farm  
Cumming, Georgia • 770-886-6849

# Recent Failures of Endecticide Pour-ons to Control Internal Parasites in Grazing Cattle.

Donald H. Bliss, Ph.D.  
MidAmerica Ag Research  
Verona, WI 53593

---

Strategic deworming is simply the use of a dewormer to remove parasites in grazing cattle at key times of the year for maximum protection. These strategic timed treatments are designed to remove parasites before they have a chance to cause economic loss and to prevent dangerous build-up of parasite contamination in the environment of the animals. In cow/calf operations, the strategic timing usually involves a late fall treatment of the entire herd to keep the herd parasite-free over the winter months followed a treatment in mid-spring after the cattle have been exposed to parasite challenge on the pasture in the spring but before the cattle have begun to shed worm eggs back on the pasture. Depending upon the age of the animals and production standards of the herd, a second spring treatment is sometimes required to complete the strategic program.

Strategic deworming only works if the dewormers used are efficient enough to prevent worm egg shedding for four to six weeks following treatment which reduces parasite re-contamination of the pasture. If cattle continue to shed worm eggs in the feces following treatment, the benefit for pasture clean-up is eliminated. Fecal worm egg counts taken after treatment with endectocide pour-ons show that continual egg shedding is occurring following treatment with all these endectocide pour-ons.

This failure of the endectocide pour-ons to eliminate worm egg shedding is causing a second problem. Since this worm survival and continual egg shedding is occurring while these chemical compounds are still active in the animals, both the worms themselves and their eggs which are being shed on the pasture have been exposed to these deworming compounds. This reduced efficacy and continual product exposure by the parasites over time will lead to the development of parasite resistance to these compounds. Recent data indicates that parasite resistance is now a real threat in operations where the pour-ons have been used for several years.

The reason for the reduced efficacy is reduced absorption into the bloodstream compared to injectable formulations. Blood level determination following treatment with doramectin in an injectable (90% absorbed) and pour-on formulation (15% absorbed) is described as follows: (1). 200 mg/kg injectable will deliver maximum concentrate in plasma 32ng/ml. (2). 500 mg/kg pour-on will deliver maximum concentrate in plasma 12ng/ml. This reduced blood level indicates that many animals may not be receiving a therapeutic dose following treatment, leaving parasites that survived pour-on treatment still in the animals, which in turn, renders these pour-on products unsuitable for use in a strategic deworming program.

Reports on pour-on resistance developing have become more and more frequent indicating that the problem is becoming widespread. The dilemma which occurs for the producer is that the pour-ons are needed for external parasite (lice and grubs) control. Therefore, it appears that the endectocide pour-ons should not be used alone. Whenever an endectocide pour-on is being used in a herd, an oral dewormer such as fenbendazole (Safe-Guard™/Panacur® – Intervet, Inc.) should be used at the same time or within just a few weeks of pour-on treatment to prevent parasite resistance from occurring.

# Sweeten Up Your Herd With Some Honey

These top quality females are the fruits of our new program at Honey Ridge Plantation. The four bred heifers are half sisters, all being sired by CL 1 DOMINO 212M and out of good Victor cows. All four of the heifers will be carrying the service of our exciting Junior Herd Sire, SC HRP 101T VICTOR 107 P5 ET, whose dam is a full sister to 103T. This powerful cross (Line 1 Domino X Victor Domino) is a sure bet to produce some front pasture cows for your herd. Check them out and the other great Hereford cattle that will be offered at the AgCenter in Perry on Saturday, April 8.



**HRP 212M VICTORIA 435**  
(Co-owned with Matt Davis, an FFA student at Effingham High, who showed 435 this past season.)



**HRP 212M VICTORIA 437**



**HRP 212M VICTORIA 438**



**HRP 212M VICTORIA 439**

**HoneyRidge**  
Plantation

Sam and Pat Zemurray  
477 Honeyridge Rd. • Guyton, GA 31312  
Office (912) 772-3118 • Home (912) 234-7430  
*We invite you to come by and view our new program.*

# JPH

**Building the Best Beef Cow... One Johnson Polled Hereford at a Time!**

Come See Our Six Lots Consigned to the Georgia Hereford Association Spring Sale in Perry, Georgia on April 8, 2006.

**1 3TKJ Miss Sheba Step 120F L86**

D/O/B 01/17/01 – Sells Bred

EPDs: BW +2.1 WW +26 YW +42 MM +18 MG +31

**4 3TKJ G36 Dolly 1825 P184**

D/O/B 01/03/05 – Sells Open

EPDs: BW +4.7 WW +39 YW +70 MM +13 MG +33  
FAT +0.01 REA +0.16 IMF +0.02

**2 3TKJ Miss Sheba H364 M103**

D/O/B 12/07/01 – Sells Bred

EPDs: BW +1.3 WW +28 YW +42 MM +19 MG +33

**5 3TKJ F19 Mary Nell 1825 P187**

D/O/B 01/06/05 – Sells Open

EPDs: BW +2.6 WW +34 YW +62 MM +10 MG +27  
FAT +0.01 REA +0.17 IMF +0.09

**3 3TKJ N129 Lady Kat 3059 P180**

D/O/B 12/31/04 – Sells Open

EPDs: BW +4.6 WW +46 YW +76 MM +20 MG +43  
FAT -0.01 REA +0.29 IMF +0.00

**6 3TKJ N136 Lady Nell 3059 P190**

D/O/B 01/07/05 – Sells Open

EPDs: BW +4.9 WW +50 YW +83 MM +21 MG +46  
FAT +0.00 REA +0.17 IMF +0.03

L86 and M103 will be bred to THM 3TKJ ZEUS LAD 5032 ET.

ZEUSs EPDs: BW +3.2 WW +41 YW +73 MM +28 MG +49  
FAT +0.01 REA +0.37 IMF +0.02

## Johnson Polled Herefords

Owners: Tommy, Kathy, Taylor & Tyler Johnson

7731 BASTONVILLE ROAD • WARRENTON, GEORGIA 30828-2100

Evenings: (706) 465-2421 Cell: (706) 339-4607 E-mail: tomrjohnson@jeffersonenergy.com

Certified and Accredited Herd # 205

**BULLS AND COWS ALWAYS FOR SALE AT PRIVATE TREATY**

### GRIFFIN HILLS FARM



POLLED HEREFORDS

2186 Gum Creek Road  
Oxford, GA 30054

Donald R. Griffin • (770) 786-7868  
E-mail: griffinhills@worldnet.att.net

Phone  
(706) 484-1799



Phone  
(770) 786-7868

### BAILES RANCH

Pete & Shirley Bailes

301 Dennis Station Rd., SW  
Eatonton, Georgia 31024

### Anderson Polled Hereford Farm

Selling Private Treaty

1150 Dent Road • Odum, GA 31555

Chris Anderson

Home (912) 586-6004

Cell (912) 269-8003

andersonfarm@hotmail.com

## GHA Member Web Page and E-Mail Address



Apple Valley Farm – Bill Sims  
E-mail: bsimsins@alltel.net

Cherry Ridge Farms – Ricky Yarbrough  
Web Site: [www.cherryridgefarms.com](http://www.cherryridgefarms.com)  
E-mail: [cherry\\_ridge@cattle-today.com](mailto:cherry_ridge@cattle-today.com)

Georgia Hereford Association  
Ricky Yarbrough, Site Manager, 478-986-5304  
Web Site: [www.georgiahereford.org](http://www.georgiahereford.org)

Hill-Vue Farm – Bud Hill  
E-mail: [bhillvue@aol.com](mailto:bhillvue@aol.com)

JWR Land and Cattle – Wesley Rakestraw  
Web Site: [www.jwrlandandcattle.com](http://www.jwrlandandcattle.com)  
E-mail: [jwrlandandcattle@aol.com](mailto:jwrlandandcattle@aol.com)

Leonard Polled Herefords – Sherman Leonard  
Web Site: <http://www.lphfarm.com>  
E-mail: [herefords@alltel.net](mailto:herefords@alltel.net)

Mead Cattle Enterprises – Tommy Mead  
Web Site: [www.meadcattle.com](http://www.meadcattle.com)  
E-mail: [meadcattle@jeffersonenergy.com](mailto:meadcattle@jeffersonenergy.com)

Kay McCurdy  
E-mail: [herefords@alltel.net](mailto:herefords@alltel.net)

Moore Farms – Terry Moore  
Web Site: <http://www.moorefarms.net>  
E-mail: [terry@moorefarms.net](mailto:terry@moorefarms.net)

## CALENDAR OF EVENTS

|                     |   |
|---------------------|---|
| March 1, 2006       | 48th Annual Tifton Bull Test Sale<br>Irwinville, GA |
| March 9, 2006       | UGA 14th Annual Bull Sale – Athens, GA              |
| April 6, 7, 8, 2006 | Georgia Beef Expo – Perry, GA                       |
| April 18, 2006      | Tifton HERD Sale – Irwinville, GA                   |
| May 6, 2006         | JWR Binding the Best IV – Dallas, GA                |
| August 26, 2006     | 7 Oaks Plantation "Picnic Sale"<br>Senoia, GA       |

## ANNOUNCEMENTS

Advertising pages will be on sale at the Annual Membership Meeting of the Georgia Hereford Association for the 2006-2008 Georgia Hereford Directory. Make plans to take advantage of the opportunity to purchase an ad.



*Billy Martin of Sunset Ridge Farm, Cumming, Ga., had the top indexing Hereford bull at the Calhoun, Ga., Bull Test and at the Tifton, Ga., Bull Test.*



## MALCOLM FINANCIAL GROUP

*"Since 1974"*

B. Frank Malcolm, Sr., CLU  
GCA Member  
(Piedmont & Morgan)

- Estate, Financial and Eldercare Planning
- Complimentary Financial Profile Available to GCA Members

"Folks don't plan to fail, but many fail to plan."  
[www.georgiaretirementcouncil.com](http://www.georgiaretirementcouncil.com)

Office: **770-786-4820** Cell: **770-598-7192**  
(Available for a limited number of programs in 2006.)

Contact Frank Malcolm at 770-786-4820, cell 770-598-7192, or Bill Sims at 706-335-2808, cell 706-614-1255.

See the two first  
**CALF PAIRS**  
consigned to the  
Spring Hereford Sale,  
April 6, at Perry.

*Each has a heifer calf.*  
You'll like these pairs!

VISITORS ALWAYS WELCOME

**POWERLINE  
POLLED HEREFORDS**

*Breeding Functional Cattle*

FRANK THOMAS  
Rt. 1, Box 40 • Alamo, GA 30411  
912-568-7743

JWR invites you to  
**“Blending the Best” IV Production Sale**

Saturday, May 6, 2006 – 11 a.m. – At the Farm near Rockmart, Georgia

**130+ Head Selling!**

Donors, Flushes, Embryos, Show Heifers, Herd Bulls, Cow/Calf Pairs



060R – Show quality September heifer calf sired by Keymaster.



101R – September heifer calf sired by 1236.



062R – Show quality September heifer calf sired by Marshall L57.



079R – September “Tundra” heifer calf. She will show!



044R – One of the first “Bluegrass” heifers offered.



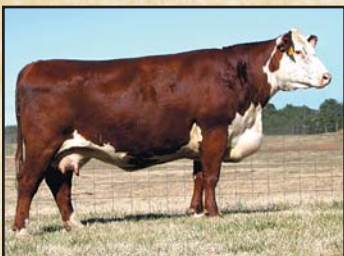
206R – “Battle Ground” out of 1236’s full sister.



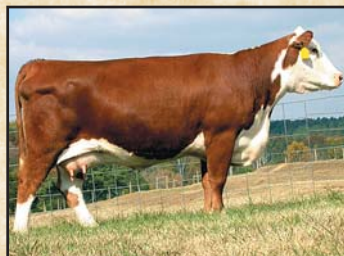
048R – April heifer sired by “Tundra.” She will show!



046R – Show quality P606 daughter. Also selling her awesome dam.



897 – Double bred “Spot.” Sells with a Keymaster heifer calf.



J9 – Sired by S97. Sells with a 1236 heifer calf.



16K – Beautifully uddered daughter of Farley. Sells bred to Demolition.



M8 – 3 year old sired by 29F. Sells with a Marshall L57 heifer calf.



For more information or a catalog, please contact us.

Wesley, Sharon, John, Josh, & Jake Rakestraw  
 401 Butler Industrial Drive • Dallas, GA 30132

Tom & Tammy Boatman – (770) 684-1926 • Cell (770) 354-4195  
 Barn Office (770) 684-1121

E-mail: [jwrlandandcattle@aol.com](mailto:jwrlandandcattle@aol.com)  
 Web site: [www.jwrlandandcattle.com](http://www.jwrlandandcattle.com)

**GHA**  
 Route 1, Box 40  
 Alamo, GA 30411

CHANGE SERVICE REQUESTED

Prsrt. Std.  
 U.S. Postage  
**PAID**  
 Alamo, GA  
 Permit No. 12