



GHA SPOTLIGHT:

Quail Ridge Ag, Sylvania



Quail Ridge Ag is owned and run by Scott Sell of Sylvania, Georgia. Scott graduated from UGA with a degree in animal science. While there he studied under Dr. Terry Kiser, a friend and well-remembered advisor to Hereford producers at the time. Scott credits Dr. Kiser with teaching him many of the practical skills that have served him so well in his later working career. "He was one of the greatest teachers I ever had," says Scott. Scott's wife Nancy also has a degree in animal science from UGA and later received her master's from the University of Kentucky. Nancy teaches Ag at the local high school and is very active with the FFA program there. The couple have three children: Josh (6), William (5), and Sadie Elizabeth (2 months).

Scott's first work experience was with Extension where he served 11 years as a county agent. During this time he honed his skills as a livestock specialist and developed his trademark dedication to helping other cattlemen. Scott really likes to see others succeed and doesn't mind sharing his knowledge in order to make that happen.

In the spring of 1994 Scott bought 10 F1 baldy heifers from Mr. James Thompson, a well-known Hereford breeder also from Sylvania. These were Scott's first cows of his own and he says, "These were the most durable cows I ever had. One of the calves, born in '95, is still in production and looks like she's five. One of the original heifers had a calf every year until she was 16." These cows were his foundation and their influence lives on in his herd today.

There are now 90 head of commercial cows, 25 purebred Angus, and 250 fall and summer stockers in the Quail Ridge herd. "Almost all the feeders are at least one quarter Hereford," says Scott. Last year, in a joint venture with Mr. Ed Bodiford of Sylvania, straight Herefords performed well in the stocker stage. "I like the way they fed and I like the way they cut," said Bodiford. In addition, Scott is feeding 50 breeding bulls (including some Herefords) for others and himself. Scott wants to put some more Hereford influence back in his herd and plans to start next breeding season. He likes the profitable traits they bring to the table.

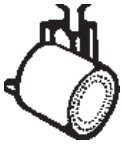
Four years ago, when Quail Ridge Ag was founded, Scott started out by selling mineral and feed. He quickly came to realize that what most people really needed was help in working their cattle. Trying to fill that need, Scott developed many commercial and purebred customers. As of today he has two purebred Hereford operations that he assists. Scott says, "After leaving Extension I knew I could make a living, but I never dreamed it would be so good." Today Scott runs Quail Ridge Ag with the able assistance of Zach Miller, herdsman, and Kalyn Stuart, who has just graduated high school. Zach showed Herefords in 4-H and his Kiwanis heifer of 1995 is still going strong.

Some of the custom cattle services that Quail Ridge offers are consulting, feed, pregnancy testing, AI, vaccinations, castrations, hauling and EID. In addition to the traditional palpation for preg testing, Scott also offers blood testing as a

(Continued on Page 2)



Cattle graze in front of Scott and Nancy's house.



GHA Spotlight ...

(Continued from Page 1)

non-invasive method of determining pregnancy. "There is no chance of an abortion with this method," says Scott. The blood samples are sent to Bio-Tracking in Moscow, Idaho, and the results are usually back in 48 hours, but can be overnighted if necessary. The EID (electronic identification) is a new service and could potentially be very important as the COOL regulations come into effect later this year. Marketing is another area where Quail Ridge Ag has much to offer its customers.

Like other cattle producers, Scott has felt the pinch of higher costs of production. For example, between May 15 and June 15 of this year his fuel costs were \$1800. Between June 15 and July 15 of this year those costs had ballooned to \$2500. One measure Scott has taken is to switch to corn silage due to high hay and feed costs. He has noticed a better conception and growth rate since he made the switch. Last breeding season



Zach, Kalyn and Scott in front of new silage pit.

his conception rate was 96%. He also has a feed truck equipped with scales which feed the silage at a precision rate. Chicken litter in fertilizer and feed is another adjustment that was made. The litter runs 23% protein.

With 410 acres in the Quail Ridge operation, Scott and his crew stay very busy. They seem to have their fingers on the pulse of the cattle business and because they are producers themselves, they can easily relate to the needs and problems of their customers. They have many irons in the fire, but somehow they make it all come together smoothly. Their goal is simply to make a profit for their customers and so far they have had remarkable success.

— Sam Zemurray

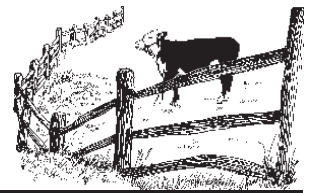


Steers on feed at Quail Ridge.



Down at the Sortin' Pen

By RANDY ROBERTS, President
Georgia Hereford Association



THANK YOU, THANK YOU, THANK YOU!

Let's see, where and to whom do I begin to say thank you? There are so many that did so much I am afraid that I will leave someone out if I start trying to name everyone.

But since I have to start somewhere, I guess I should begin by saying thank you to Henderson Farm (Adam, Regina, Deprise, Sam, and Jackson Henderson), Camp Branch Farm (Richard Lori, Jacob, and Tessa Henderson), and Timberline Farm (Barry, Rosanne, and Mindy Dees). These folks were willing to step forward and host our Field Day and Junior Show. The field day was wonderfully organized and smoothly run.

They were ably assisted in their efforts by their cousin Diann Stickland and the ladies of the Georgia Poll-ette's.

Since I have been there and done that, unless you have ever hosted or helped to put a field day on, you cannot imagine the effort involved in hosting this special annual event.

As we talk about field day, I want to include a very special THANK YOU to Sharon Rakestraw and her family for their

special donation to the Georgia Junior Hereford Association. The contribution they made in memory of Wesley will be used to establish a scholarship that will be given each year to the member that is the overall winner of the showmanship competition at the field day.

I also want to say thank you to everyone that worked to make the 2008 Southeastern Regional Junior Hereford Show at Perry the success that it was.

In no specific order, the first thank you goes to all the farms, companies, friends, and individuals that supported the show financially. No amount of effort would have been successful without the funds to make the show and the meals possible.

Thank you to the Georgia Poll-ette's. These ladies stepped forward big time this year, assisting with the Field Day and planning the Friday night and Saturday meals at the Southeastern Regional show. They also organized and staffed the hospitality room during the show.

In addition, they organized and handled many of the junior activities at the field day. These included the speech,

poster, and photo contest. They organized the Hereford Queen and Princess competition. And last, but certainly not least, they selected the recipients of the scholarships they award each year.

Thank you to all the volunteers that came early and stayed late at Perry to help make sure the show ran smoothly.

Thank you to the officers and directors of the Georgia Hereford Association. They helped to fill in the blanks. They did what was needed.

And last, but certainly not least, a special thank you goes to Debbie and Ray Hicks, the sponsors for our Georgia Junior Hereford Association. It can be tough enough to get the junior show at the field day organized, but to have to organize and coordinate the Southeastern Regional just two weeks later is a tribute to their devotion and love for our juniors.

Just for Thought:

Plan as though you will be living for a century; live as though you will be leaving today.

J. Taylor Neighbors

POLLED HEREFORDS

WELCOMES

as our senior herd sire...



LPH Bandit L-788 ET

Co-owned with Sunset Ridge Farms and Leonard Polled Herefords

Special thanks to Shanaid Farms, owner Scott Murphy, for purchase of our consigned cattle in the 2008 Georgia Hereford Association Sale.

J. Taylor and Linah Neighbors, Owners • (229) 924-0091
525 District Line Rd. • Americus, Georgia 31709

VISITORS ARE ALWAYS WELCOME!

High Quality Herefords
HoneyRidge
Plantation

Sam and Pat Zemurray
477 HoneyRidge Road • Guyton, GA 31312
Office (912) 772-3118
Night (912) 234-7430 Fax (912) 772-3614

DOUBLE (BB) FARM

Registered Polled Herefords

Cows & Bulls
For Sale at
Private Treaty



Herd Certified
and Accredited
No. 127

Bobby Brantley
1750 Wommack-Brantley Rd. • Tenuille, GA 31089
Cell 478-553-8598 • Home 478-552-9328
doublebfarm@washemc.net

Apple Valley
Farm

Building a Solid Breeding Program
6062 Jefferson Rd. • Commerce, GA 30529
Office 706-335-2808 Home 706-335-6085

Georgia Field Day & Junior Preview Show

June 13 & 14

Exchange Club Fairgrounds
Waycross, Ga.



Princess Savannah Roberts and Queen Mary Porter.



Left to Right: Colby Crawford – 3rd, Junior Photo Contest; Cole Brogdon – 3rd in Senior Photo Contest and 2nd in Speech; Gabe Brogdon – 1st in Junior Photo Contest and 3rd in Junior Quiz.



Showmanship Winners – left to right: Krissi McCurdy, Intermediate Champion; Hannah Roberts, Junior Champion; Ansley Brannen, PeeWee Champion; Judge Amanda Zeahl; Stephen Weavil, Senior Champion and Overall Champion.



Left to Right: Austin Hattaway – 2nd in Junior Poster Contest, and 2nd in Junior Quiz; Kristen Hattaway – 1st in Junior Poster Contest and 1st in Junior Quiz; McKayla Ridley – 1st, PeeWee Quiz; Karen Roberts – 1st in Senior Poster Contest and tied for 2nd in Senior Quiz and 1st in Intermediate Speech Contest; Krissi McCurdy – tied for 2nd in Senior Quiz.



Left to right: Austin Hattaway – 2nd, Junior Poster Contest; Kristen Hattaway – 1st, Junior Poster Contest; Hannah Roberts – 3rd Junior Poster Contest; Karen Roberts – 1st, Senior Poster Contest.



Speech Contest Winners – left to right: Hannah Roberts, 1st in Junior Speech; Cole Brogdon, 2nd in Intermediate Speech; Karen Roberts, 1st in Intermediate Speech.



Stephen Weavil with his Grand Champion Heifer – NXGN Tiffany T03 at the 2008 Georgia Field Day.



McKayla Ridley with her Grand Champion Steer, R5 Gold Medallion T32. Also pictured is McKayla's dad, Seth Ridley.



Whitney Shepperd and her Grand Champion Bred and Owned Bull. The bull's name is CLH WLS Achilles 80P U16.



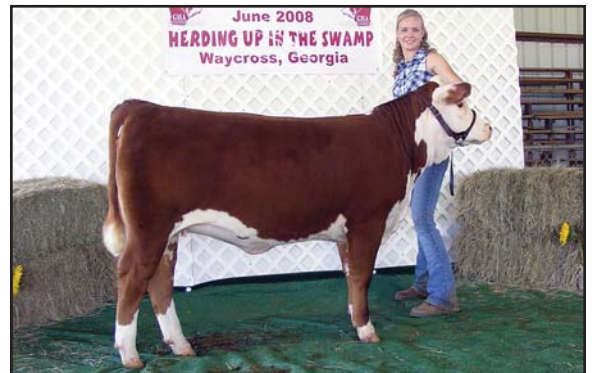
Shelly Patton with 2103 4002 SP Pylee Belle 791S, her Division III Champion, Reserve Grand Champion Owned Heifer, and Grand Champion Bred and Owned Heifer. Shelly was awarded the Georgia Poll-ette Belt Buckle for winning Reserve Grand Champion Heifer. She also received the J.E. Strickland Belt Buckle for winning the Grand Champion Bred and Owned Heifer. With her are members of the Strickland family.

Tommie Lynne Mead receives the W. A. Leonard Memorial Belt Buckle with her Reserve Champion Bred and Owned Heifer – THM TL's Maybell 8723. Left to right: Sherman Leonard, Judge Amanda Zeahl, Tommie Lynne Mead.



Tommie Lynne Mead with the Champion Cow/ Calf Pair. Cow's name – THM 163M Vicky Belle 4106; calf's name – THM TL's Maybell 8723.

Tommie Lynne Mead and her Class 3 Winner and Division 1 Champion – Glenview TL's Anastasia 8709 ET.



Tommie Lynne Mead and THM TL's Biddy 7485 ET, Class 8 Winner and Division III Reserve Champion.

Gavyn Crawford and the winner of Class 6 and Division II Reserve Champion – LCC 413 Della 4T.



Junior Dates to Remember



August 15-16

Houston County Young Farmer's Show, Perry, GA

August 30-31

"Bring on the Heat" Jackpot Cattle Show
Wiregrass Arena, Nicholls, GA

September 1

Deadline for entries to the Georgia National Fair

September 11-21

Gwinnett County Fair, Lawrenceville, GA

October 1

Ownership and Deadline for entries for the State Steer and Heifer Show

October 2-5

Georgia National Fair, Perry, GA

October 15-18

Kiwanis Ogeechee Fair, Statesboro, GA

October 17

DNA Samples for State Steers, Sylvania, GA

October 18

DNA Samples for State Steers, Tifton, GA

October 17-25

Georgia Carolina State Fair, Augusta, GA

October 28-November 1

Albany Fair, Albany, GA

November 1

Coastal Empire Fair, Savannah, GA

November 1

NW AgGeorgia Farm Credit Heifer Show, Calhoun, GA

November 14

DNA Samples for State Steers, Calhoun, GA

November 15

DNA Samples for State Steers, Athens, GA

December 12-14

Wiregrass Winter Classic, Nicholls, GA

January 9-10

Moultrie Jackpot Cattle Show, Moultrie, GA

January 10

Jeff Davis Cattle Jackpot

January 24

MooMoo Classic, Sylvania, GA

February 18-22

State Livestock Steer and Heifer Show, Perry, GA

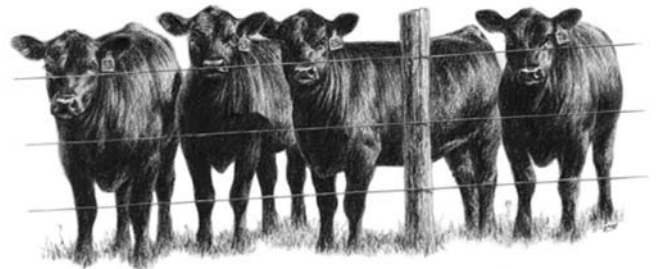


CONGRATULATIONS JUNIORS for your outstanding efforts in the **2008 Georgia Field Day and Junior Preview Show** held in Waycross, Ga., Friday and Saturday, June 13-14. "Herefords on My Mind" was a huge success in the "Land of the Trembling Earth." Please be certain to thank Henderson Farm, Camp Branch Farm, and Timberline Farm families for hosting the show, and Diann Strickland and the Georgia Poll-ettes for their assistance.

•••••

The **2008 Southeastern Regional Junior Hereford Show** at Perry, Ga. was a great success with Juniors showing off Hereford entries that were top of the line. **THANK YOU, JUNIORS**, for your participation in this event.

Quail Ridge Ag



Quail Ridge Ag and Livestock Services

Livestock Marketing, Services,
Supplies and Consulting

912-682-9590 • 912-863-6634

Sylvania, Georgia

www.quailridgelivestock.com

Which Winter Annual is Best for You?

By Wayne Tankersley

Winter annual forages are an integral component of many livestock forage systems. They work well providing much needed high quality forage in the winter and early spring months. When one refers to winter annuals, most likely they are referring to small grains (oats, wheat, rye) or to annual ryegrass.

The question becomes, "Which winter annual should I use?" The answer depends on several factors including (1) grazing period and length, (2) seed availability and cost, (3) type of seedbed, (4) yield and (5) planting method.

- ◆ **Grazing period & length** – In general, small grains are more cold tolerant than annual ryegrass, thus they produce more forage growth during the colder winter months. They also tend to mature quicker than ryegrass in the spring (see chart). This can be an advantage if winter annuals are grown on land to be planted to a summer row-crop or overseeded on hay fields where early spring green-up of the perennial grass is desired. On the other hand, with adequate moisture, ryegrass can provide high quality forage from late winter to early summer. However, ryegrass can suppress spring and early summer green-up of perennial grasses.

- ◆ **Seed availability & cost** – In most years, winter annual seed availability is not an issue. But more recently, certain varieties of small grains and ryegrass have been in short supply. Getting desired varieties and needed quantities of winter annual seed requires forward planning and early booking. Seed cost varies widely depending on the source of seed and variety. In general, ryegrass seed cost will run from \$10-\$18 per acre. Small grain seed cost is more variable, but can be \$25-\$35 or more per acre.

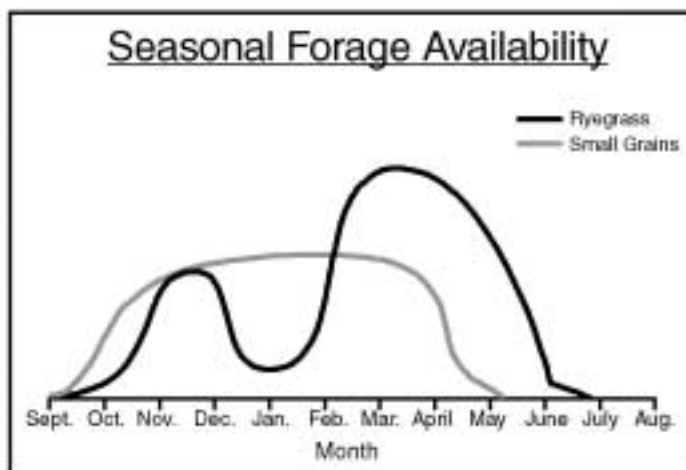
- ◆ **Type of seedbed** – The earlier winter annuals can be planted, the more total forage they will produce. This is particularly true for small grains because of their earlier maturity. As such, small grains provide

greater utilization and yield when planted early on a prepared seedbed. Waiting to overseed small grains after warm season pastures and hayfields go dormant can significantly lower yields and shorten the production window. Because of its later maturing growth habit, ryegrass yield and utilization is not as adversely affected in an overseeding scenario.

- ◆ **Yield** – In Georgia yield trials, ryegrass has consistently produced more dry matter forage than small grains (see table). This is significant where the winter annual forage will be used for hay or silage or where heavy livestock stocking rates are required and maximum tonnage of forage is needed.

- ◆ **Planting method** – Small grains are not very forgiving of shallow or surface planting of seed. Because of this, they must be planted with a drill or mechanically incorporated at the proper planting depth on prepared seedbeds. Ryegrass tolerates shallower planting. In many instances, adequate stands of ryegrass can be obtained when seed are broadcast on the soil surface and lightly incorporated with a drag.

Producers would be wise to consider each of these factors in order to select the best winter annual forage for their specific farm needs and management system.



2 Yr. Avg. Winter Annual Yields

Forage	Tifton	Griffin
Ryegrass	10,166	10,687
Wheat	8,444	7,842
Rye	9,002	7,661
Oats	7,798	4,830

'07 & '08 GA Statewide Variety Trials (Dry Matter Yield lbs/A)

Pennington's Wintergrazer 70 Rye and Passerel Plus Annual Ryegrass are high yielding and widely adapted winter annual forages. For more information, call 1-800-285-SEED or visit www.penningtonseed.com.

Wayne Tankersley is a forage agronomist with Pennington Seed, Inc.



Mature Cowherd Dispersal

Sept. 13, 2008 • 11 a.m.

Selling 86 Cows 2 to 7 years old with calves
Average Progeny WW Ratio 102.1



LLL Miss Tradition 88M — Lot 64

Avg. progeny weaning wt. ratio 106.7. EPDs rank in top 10% for WW and MM.



LLL Gloria 35N — Lot 13

Avg. progeny weaning wt. ratio 107.3. EPDs rank in top 10% for MM and M&G.



LLL Alternate Lady 118P — Lot 48

Avg. progeny weaning wt. ratio 110.5. EPDs rank in top 10% for MM and M&G.



LLL Surety 107R — Lot 33

Genetics include 3 Dams of Distinction, 4 Sires of Distinction and 5 CHB Sires. EPDs rank in top 10% for MM, M&G and REA.

LiveAuctions TV

View Live Video of Entire Triple L Ranch Sale Offering at: www.111ranch.com

See catalog with August Hereford World, or request yours today.



JDH Marketing Services

Jack D. Hedrick
220 Rolling Fork, Columbus, MS 39705
(662) 327-3604 • (662) 329-2643 Fax
(904) 613-4261 Cell • jdh@cableone.net

5121 Bedford Creek Rd. • Franklin, TN 37064

Visit our Web site at: www.111ranch.com • triplel1ranch@msn.com
Steven Lee (615) 799-8085 • Wallace Lee (615) 799-2373
Office (615) 799-2823 • Fax (615) 799-2274
Daniel Fold (615) 799-8469

TRIPLE
Franklin



RANCH
Tennessee



Georgia Poll-ettes

The Georgia Poll-ettes held their annual meeting at Okefenokee Fairgrounds during Field Day in Waycross. Officers and directors elected to serve for 2008-2009 were President, Diann Strickland; Vice President, Kay McCurdy; Secretary-Treasurer, Debbie Pease. Directors elected to serve for two years were Robin Mead, Peggy Leonard, and Pearl Welty. They will join directors Angie McGinnis, Charlene Roberts, and Elaine Roberts serving a one year term.



The Poll-ettes served dinner on Friday night and lunch on Saturday to all who attended the Southeast Regional Show held in Perry, June 27-28. A **SPECIAL THANKS** to John Smith for cooking! A **BIG THANK YOU** to all Poll-ette members and GHA members who brought desserts, ran errands, served food, worked in the hospitality room, and helped with the clean-up. The Southeast Regional Show would not have been successful without your help and support. **YOU ARE THE GREATEST!!!!**

Our thanks go to Richard Henderson, Adam Henderson, Barry Deas and their families for hosting a great Field Day. The facilities, food, hospitality were superb. **A JOB WELL DONE!**

The silent auction held at Field Day netted \$300. Southeast Regional silent auction netted \$200. Thanks to those who contributed to the auction and a super **BIG THANKS** to those who purchased.

CONGRATULATIONS to Amanda Roberts, winner of the Waunell Strickland Scholarship of \$,1000, and Mindi Deas, winner of the Judy Thomas Memorial Scholarship of \$1,000.

Mary Porter of Jesup was crowned Georgia Polled Hereford Queen and Savannah Roberts was crowned Georgia Polled Hereford Princess. **CONGRATULATIONS!!!** Mary represented Georgia at the Junior National Hereford Expo in Kansas City, Missouri, during July.

The Poll-ettes awarded prize money in the amount of \$300 to juniors for their participation in the Photo, Poster, Speech, and Beef Quiz contests. **CONGRATULATIONS** to all participants.

Don't forget to send in your dues no later than August 1. We need your help and support. Throughout the year, we raise money to help our junior members. Mail your dues of \$10 to Debbie Pease, 4305 Mallard Pond Road, Statesboro, Georgia 30458. At present, we have approximately 32 members, which are 20 short of last year. **PLEASE SEND DEBBIE YOUR DUES.**

If you would like to serve on a particular committee, please let me know. Committees include queen, juniors, membership, scholarship, nominating, and fund raisers. This is your organization and everyone is needed to serve on a committee so that we can stay the number one Poll-ette organization in the nation!

We are in dire need of some fund raising ideas as the National Organization of Poll-ette dues have gone from \$5 per member to \$10 per member per year. Either dues will have to be increased this next year, due to the NOP increase, or we need to do some serious fund raisers. We do accept donations.

Alabama, Georgia, and Florida will be electing a new NOP director in the fall. If you are interested in competing for this director position please let someone know of your desire to be placed on the nomination ballot. Members will receive nomination ballots in September. You will write down the name of a Poll-ette member that you would like to nominate to run for director from Area 10. The two members receiving the largest number of nomination votes will then compete for the directorship. Members will receive a ballot, about the last of September, to cast a vote between the two nominees for their choice to serve as NOP director for the next four years. Please pay your dues so you can participate in the director elections. We need everybody to vote!

THANKS to Starr Whaley for serving as our NOP director for the past four years. We know it was very time consuming to represent our area. We appreciate you going above and beyond the call of duty. **GREAT JOB!!**

HAVE A SAFE AND HAPPY FALL!!!

THANK YOU

Dear Georgia Poll-ettes,

I would like to take this time to thank you for selecting me for the Judy Thomas Scholarship given at the GHA Field Day. I sincerely appreciate you taking the time to interview possible candidates. This was a good experience for me, and I am grateful for the confidence you bestowed upon me to use this money to further my education. This scholarship will be very helpful when I begin my sophomore year at Waycross College, August 17. Thank you for providing college students with this opportunity.

Again thanks,
Mindi Deas

GEORGIA POLL-ETTES OFFICERS AND DIRECTORS



President Diann Strickland PO Box 128 Mershon, GA 31551 912-647-5439 (Home) 912-449-2077 (Work) 912-288-0024 (Cell) diann_strickland@hotmail.com diann@pierce.k12.ga.us	Vice President Kay McCurdy 1284 New Hope Rd. Chatsworth, GA 30705 706-695-9634 (Home) herefords@alltel.net	Secretary-Treasurer Debbie Pease 4305 Mallard Pond Rd. Statesboro, GA 30458 912-587-2388 (Home) dpease@bulloch.com
Director – 1 year Angie McGinnis 2810 Macedonia Church Rd. Danielsville, GA 30633	Director – 1 year Charlene Roberts 296 Bud Hutcheson Rd. Douglas, GA 31535	Director – 1 year Elaine Roberts Rt. 1 Box 4260, Wycliff Roberts Rd. Alapaha, GA 31622
Director – 2 years Peggy Leonard 1075 Hwy. 225 N. Chatsworth, GA 30705	Director – 2 years Robin Mead 1222 Reeves Rd. Midville, GA 30441	Director – 2 years Pearl Welty 1203 Ethridge Mill Rd. Griffin, GA 30224

National Director

Starr Whaley • 2634 Riverbend Rd. • Dalton, GA 30721



Winning the Waunell Strickland Scholarship and the Judy Thomas Memorial Scholarship were Mindi Deas and Amanda Roberts. Shown above are Diann Strickland, Mindi Deas and Amanda Roberts.

ENJOY A SOUTH GEORGIA WEEKEND... 2 For 1

**Camp Branch Farms/Henderson Farms 1st Production Sale
Friday, Sept. 26, 2008 • 5 p.m.**

Sale will be held at the Circle F Farm Sale Facility, Baxley, Ga.

Selling 65 Lots: ET Calves, Bred and Open Heifers, Spring Pairs

Featuring the Get and Service of: AB Demolition, P606, Patriot 13P, Mohican Prime Up 72P, Mohican Eureka 67J, Prince Victor 71I, THM Durango 4037, Reload 80P, KJ C&L J119 Logic 023R, CMF 612L Rusty 830S, CMF On Target 615L, LLL Custus 51N, SAH Victor P606 JR C26



Sire: JLH Victor
Power Brood Cow



Sire: Mohican Mint 19M
Dam: Mohican Plus 107M



Sire: CMF 21E Logan 544K
Dam: Mohican Plus 107M



Sire: JWR 219L Patriotism 003S ET
Dam: CS Boomer 29F



Sire: PW Victor Boomer P606
Dam: CMF 584T Frontier 634L



Sire: JWR P416 Marshall L57
Dam's Sire: CS Boomer 29F



For sale catalog, contact:
Dale Stith, Auctioneer
(918) 760-1550
dalestith@yahoo.com

Richard Henderson and Family
P.O. Box 33 • Manor, GA 31550
(912) 283-0705 • (912) 550-3313 Cell
campbranch@bellsouth.net

Adam Henderson and Family
4000 Manor Millwood Rd. S. • Manor, GA 31550
(912) 283-7636 • (912) 337-3624 Cell

ENJOY A SOUTH GEORGIA WEEKEND... 2 For 1
CSR Polled Herefords 1st Production Sale
Saturday, Sept. 27, 2008 • Noon

At the Farm • Alapaha, Ga.

Selling 65 Lots: Fall Pairs, Bred and Open Heifers

Selling the Get and Service of: MPH CSR Mr Willis 5R, CS GV Rock 22P ET, KJCL CSR Winchester 254S ET,
 LaGrand Online 22N, LaGrand Wideload 30P

AI Sires: Nasdaq, P606, Kudzu, Reload 80P, Legend 242, World Class 10H, Anhinga Vic K16, DCC 6060



CSR Reload Girl 90G 7305

BW 4.7; WW 45; YW 76, MM 19; M&G 41; FAT 0.01; REA 0.34; IMF 0.07
 Sire: LaGrand Reload 80P ET • MGS: Kiywana New Trend



CSR Lady Nasdaq 1174 7311

BW 3.6; WW 43; YW 70, MM 21; M&G 43; FAT 0.00; REA 0.75; IMF -0.04
 Sire: PW Mohican Nasdaq P316 • MGS: H 8E Embracer 8006



Walker PRM Miss 60C L25 509

BW 4.8; WW 43; YW 77, MM 21; M&G 43; FAT 0.00; REA 0.39; IMF -0.03
 Sire: RU Colonel 60C • MGS: CS Boomer 29F



TOF 9146 Olympia 262L 5238 ET

BW 3.4; WW 44; YW 72, MM 14; M&G 36; FAT 0.01; REA 0.15; IMF 0.07
 Sire: Remitali Olympian ET 262L • MGS: BTF Grazer 540 5015



CSR Vic Thor K16 720

BW 2.6; WW 39; YW 60, MM 20; M&G 39; FAT 0.01; REA 0.07; IMF 0.09
 Sire: Anhinga Vic S84 K16 • MGS: CSR TRM Thor 0022



CSR Nasdaq Girl H21 7312

BW 3.8; WW 45; YW 73, MM 20; M&G 43; FAT 0.00; REA 0.46; IMF -0.03
 Sire: PW Mohican Nasdaq P316 • MGS: WNH Paymaster 9606

CSR Polled Herefords

Steve and Elaine Roberts

5561 Wycliff Roberts Rd. • Alapaha, GA 31622

(229) 532-7963



For sale catalog, contact:
 Dale Stith, Auctioneer
 (918) 760-1550
 dalestith@yahoo.com



Georgia Hereford Association's Hats Off

Congratulations to Amanda Neighbors for graduating from The University of Georgia School of Pharmacy in May 2008. She will be working with Walgreens in the Buckhead area of Atlanta.

Soil Testing Now for Next Year

By Randy Roberts

The month of August is the time when forage producers need to pull soil samples from their pastures and hay fields. Samples pulled during August will give you a better picture of the soil fertility levels during the time of production than will samples pulled November through February.

If the sample results show a need for lime, a producer can get it out in plenty of time for the pH to be adjusted in time for the next growing season.

Also, soil samples taken from pastures and hayfields need to be pulled at a depth of no more than 3 to 4 inches. The root system of most forage grasses is normally found in this 3 to 4 inch zone.

REPRODUCTIVE PROGRESS

Embryo Transfer Service

On-Farm Semen Collection
Pregnancy Ultrasounding
Sexing Pregnancies



Embryos and Semen For Sale
Synchronization and Breeding
Semen Testing Bulls

RUSS PAGE, PhD.
(706) 796-0797

www.reproductiveprogress.com

1210 Sunset Ridge
Watkinsville, GA 30677



WELTY'S CATTLE SERVICES

Lucian and Pearl Welty
1203 Ethridge Mill Rd.
Griffin, GA 30224
Phone (770) 228-4445
FAX (770) 228-4499

Consulting • Marketing • Purchasing • Photography • Ring Service

H.L. Jones Auction Co.

GAL # AU003561

"Sold!"

H. L. JONES, AUCTIONEER

959 SAUNDERS ROAD • PORTAL, GA 30450

912-865-4171 • 912-865-7333 • 912-481-3581 CELL



ADVERTISING RATES

1 Issue 4 Issues Contract

1 PAGE	\$180	\$150
1/2 PAGE	96	80
1/4 PAGE	60	50
COLUMN INCH	15	12
COLOR 1 PAGE....	350	



Membership Information

Membership in the Georgia Hereford Association is on an annual basis, July 1 through June 30 each year. New members who join after March 31 each year will be credited with a full year's membership plus the remaining time in the current year.

Benefits in GHA membership include: (1) the opportunity to consign cattle to association consignment sales; (2) receiving information about shows and field days sponsored by GHA; (3) receiving a quarterly newsletter updating activity of GHA and its members; (4) having your Polled Hereford operation listed in the GHA biennial directory at no additional cost; (5) entering cattle in GHA shows; and (6) supporting an organized effort to promote Polled Hereford

cattle. In addition, you will be able to make new friends and learn what others are doing by attending the various activities such as sales, shows and field day.

GHA is a registered non-profit Georgia Corporation. A copy of the by-laws is available to anyone interested in joining the association. The association has been active since 1968.

Two affiliated groups of GHA are the Georgia Poll-ettes (the ladies support group) and the Georgia Junior Polled Hereford group.

To Join, complete the form below checking the category in which you desire membership.

GEORGIA HEREFORD ASSOCIATION MEMBERSHIP FORM

Name _____

Telephone _____

Mailing Address _____

City _____ State _____ Zip _____

Farm Name (if appropriate) _____

Address (if different) _____

City _____ State _____ Zip _____

Types of Membership: (Please check desired membership.)

Registered Breeder \$35.00

Commercial Breeder \$20.00

Poll-ettes (Ladies Support Group) \$10.00

Junior Membership (Up to Age 21) \$ 5.00

Give birthdate of Junior _____

SEND COMPLETED FORM WITH REMITTANCE TO:

GHA

660 SEABURN VICKERY RD.
STATESBORO, GA 30461

*Griffin Hills Farm says,
 "Congratulations to the Georgia Hereford Association
 for a wonderful and successful program hosting the
 Southeastern Hereford Junior Regional at Perry in June.
 Congratulations also to the Juniors for the
 wonderful meals they prepared and served."*



We will be marketing twelve to fifteen outstanding young cows that will start calving in September 2008. Come to see us!



GRIFFIN HILLS FARM
POLLED HEREFORDS

2186 Gum Creek Road • Oxford, GA 30054
 Donald R. Griffin • (770) 786-7868

Phone (706) 484-1799  Phone (770) 786-7868

BAILES RANCH
Pete & Shirley Bailes

301 Dennis Station Rd., SW
 Eatonton, Georgia 31024

Johnson Polled Herefords

Registered Polled Herefords
 Thomas R. Johnson, Owner



7731 Bastonville Road
 Warrenton, Georgia 30828
 Home: 706-465-2421 • Cell: 706-339-4607

**CSR POLLED
 HEREFORD FARM**

*"Breeding Cows for the
 Next Generation"*

STEVE & ELAINE ROBERTS

5561 Wycliff Roberts Road
 Alapaha, Georgia 31622
 (229) 532-7963 (229) 238-1129

IN MEMORIAM

Lucian Earl Welty, Sr.

Mr. Lucian Earl Welty, Sr. passed away on Thursday, July 17, 2008, at his residence.

Mr. Welty was born on July 30, 1932, in Ryan, Okla., to the late Riley E. Welty and the late Mattie Mae Alford. Mr. Welty was associated with registered cattle his entire life. He managed four large Polled Hereford operations for years. He then became the Southeast field representative for the National Hereford Association in Kansas City, Mo. Upon his retirement, 30 years later, he and his wife, Pearl, started the Welty's Cattle Service business and continued same until his illness. Mr. Welty was preceded in death by his three siblings, Estel Welty, Gene Welty and Jesse Welty.

Survivors include his wife of 52 years, Pearl; daughter, Jennifer Lynn Welty Little of the home address; son, Lucian Earl Welty, Jr.; daughter-in-law, Amy Welty; grandsons, Colby Ryan Welty and Jacob Matthew Welty, all of Prattville, Ala.; three nieces; three cousins, and his beloved little dog, Lucky, a Bichon Frise.

Memorial services were private with immediate family only.

In lieu of flowers, those desiring may make a donation to the Bethesda Home for Boys in memory of Mr. Lucian Earl Welty, Sr. Please specify that said donation is intended for Bethesda's Hereford cattle operation. Mr. Welty was responsible for starting Bethesda's cattle operation and this was his pride and joy. You may send the donation to David Tribble, executive director, P.O. Box 13039, Savannah, GA 31416. For those of you who would like to send a personal note to Ms. Pearl, the address is: 1203 Ethridge Mill Rd., Griffin, GA 30224.



**ANDEE
MARSTON**

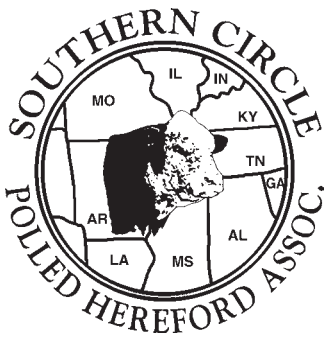
**Southeast Region Field Representative,
American Hereford Association**

Andee Marston serves as the communication link between the American Hereford Association (AHA) and breeders in Alabama, Florida, Georgia, Louisiana, Mississippi, North Carolina, South Carolina, Tennessee and Virginia.

Marston attends Hereford sales and events as well as assists breeders with marketing and genetic selection. He also helps educate members and commercial producers about AHA programs and other beef industry opportunities.

Marston joined the AHA and Hereford World staff in August 2007.

Andee Marston (615) 337-5263 Cell
3960 Bell Road #1140 (615) 942-5347 Phone/Fax
Hermitage, TN 37076 amarston@hereford.org



*Selling
approximately
50 Lots*

For information or
a catalog, call

RAY PIERCE
(731) 422-2333

Fax: (731) 424-7841

E-mail:

pierceph@bellsouth.net

or see online thru
Hereford Association
Web Site

Southern Circle Polled Hereford Association

Sale

Saturday, September 20, 2008 • 12:00 p.m.

**Mid South Livestock Center
Brownsville, Tennessee**

(Three miles east of town on U.S. Hwy. 70)

*Great female offering includes:
Cow/Calves, Bred and Open Heifers*

MANY GREAT BLOODLINES INCLUDED

Being Efficient

By Randy Roberts

Mr. Webster defines the word *efficiency* two ways: “easy and quick production of desired results; skill and capability” and “the ratio of energy expended to power produced in a machine.” He also defines the word *efficient* as “producing desired results easily.”

I think that, in light of the world in which we are trying to produce beef, we need to pay attention to both words and to all three definitions.

Why? Because it looks like we are going to have to be more efficient in order to survive. We need to be more efficient not just to survive, but to also maintain our place in the hearts of the American consumer. We have to produce a desirable product at an affordable price.

Another reason we need to be more efficient is the rising cost of feed grains. If anyone had ever told me three years ago that in 2008 farmers would be paying over \$6 per bushel for corn out of the bin, I would have questioned their sanity.

Or, if anyone had told me I would pay nearly \$12 for a bag of crimped oats, I would have had them committed.

But the truth is we now have to compete with the mania of rising fuel cost. More and more grain looks like it will be taken away from livestock production and used to produce ethanol.

One of the things that I have heard cattlemen and livestock specialists talk about all my life is that we need to pay more attention to selecting cattle that are more efficient. You know, the ones that seem to eat the same amount of feed that the other cattle do, but they seldom ever lose any body condition.

They are the ones that maintain their weight while grazing the less than ideal, less productive pastures.

They are the ones that gain faster on less feed. Or in some

cases, they gain more weight when fed the same amount of feed that your other cattle are being fed. In other words, they need to consume less feed to produce a pound of gain. This feed can either be grain or grass.

If only all Herefords had the same rate of metabolism that I do. Mine has all but stopped. I can gain more weight faster, on less food than you can imagine. It has even gotten to the point that I can look at a carton of Blue Bell “Cookies and Cream” ice cream and I feel my belt getting tighter.

All kidding aside, given the skyrocketing cost of feed we are going to have to be diligent in identifying those cattle that are efficient in producing a pound of gain on less feed.

In the days when you could buy corn for less than \$2.50 a bushel, efficiency was not as high a priority as it has become.

So, what weight do you consider to be the ideal or most efficient weight for a broodcow?

For sake of argument, let's say that you consider a broodcow that weighs 1,150 pounds to be the ideal weight. But just because she weighs 1,150 pounds does that mean that she is going to be more efficient in converting/utilizing the pounds of feed she consumes than her 1,300 pound pasture-mate?

Our biggest broodcow weighs in at around 1,350 pounds. But she maintains the same degree of body condition that most of our smaller cows do. In fact, given that she gets the same thing to eat that they do, she stays in better body condition than they do.

As we look for replacement females and the bulls to breed them to, we need to try to identify those cattle that get where we want them to be faster; they get there more efficiently; and then they stay there more easily.

Pasture and Hayfield Weed Control

By Randy Roberts

In the last few years, the number and types of herbicides available to control weeds in our pastures and hayfields has increased. But pasture and hayfield specific herbicides have not increased nearly as rapidly as the herbicides available to our row crop friends.

When I started out as a County Extension Agent nearly 32 years ago, we pretty much had three products available. They were 2,4-D, Banvel, and Weedmaster (a combination of 2,4-D and Banvel).

One of the main reasons that we have not seen nearly as many herbicides come to us is the astronomical cost involved in getting EPA registration for a herbicide. With so many environmental hoops that the companies have to put a new product through, the cost of development and testing can reach \$20 to \$25 million dollars.

So most companies want to focus on getting and maintaining labels for crops on which there is a high demand for the herbicide. Unfortunately, for most companies, herbicides for pastures and hayfields have a low economic priority.

These days, we still have products like 2,4-D, Banvel, and Weedmaster available to us. But the great news is that they have been joined by a new generation of pasture and forage grass herbicides.

One that I particularly like for the control of broadleaf weeds and briars is Remedy. If you have a problem with briars, this product is especially strong. It can be applied with either as a broadcast treatment or as a spot spray. It also does not have any residual activity. It attacks the plants to which it is applied.

A product that is used by a lot of producers in South Georgia is Grazon P + D. It is a herbicide that combines the active ingredient picloram and 2,4-D. A lot of broadleaf weeds that commonly give cattlemen and hay producers a problem is easily controlled by this product. That is why it has become a crutch to some producers. And, because of the picloram it has residual soil activity. This can be good or it can be bad.

This is why it is not recommended for use in pastures that a producer has a desire to over-seed with clovers. It can also have an adverse effect on young seedling ryegrass.

Because of the picloram (the sole active ingredient in Tordon) you need to be careful of where and you use it. The active ingredient produces a very sensitive reaction to a wide variety of broadleaf plants.

Unless it has recently been labeled for use in Florida, it cannot be legally used because of the potential effect it can have on vegetable plants.

In our area of South Georgia, I have seen the devastation it can have on fields of tobacco, cotton, and peanuts. Tobacco is especially sensitive to picloram.

Another drawback to using this product is that it does not always stay where it is applied. We first became aware of this several years ago when a farmer irrigated his tobacco with water out of his pond that was fed by a stream that ran through a neighbors pasture and then under the highway.

Grazon can easily pass through a cows system and be spread to crop sensitive areas through the urine and feces.

If you have a weed problem in a pasture or hayfield, I would recommend a step approach to control.

First, I would get the weed positively identified. This can usually be done by your County Extension Agent. If he or she cannot identify the weed, they have specialists that they can either send the weed to or they can e-mail them a picture.

Second, once you know what plant of plants you are trying to control, then you can choose the correct, most effective herbicide and the most economical rate.

Third, you can apply the herbicide. Usually the best time is about three days after a rain as this is when the plant is beginning to grow. It is tender and more susceptible to the effects of the herbicide. You should also take care to apply it far enough ahead of any possible rain to give the plant time to absorb a lethal dose.

And fourth, always follow label directions. Failure to do so is a violation of the law.



Morgan Dinsmore, from Georgia, is shown holding her Grand Champion Hereford Heifer – JBK Miss Kooter 0705 at the 2008 SE Regional Junior Hereford Show at Perry, Ga., June 27-28. Pictured, left to right, are Mary Porter; Georgia Hereford Queen; Savannah Roberts, Georgia Hereford Princess; Dave Mooney, Judge Hamilton Cornelius, and Morgan Dinsmore.



Winning 2008 SE Regional Reserve Champion Hereford Heifer is Locke St. John with his November 2007 heifer JWR LPH 155P Krissi Kay 162T. Pictured, left to right, are Mary Porter, Georgia Hereford Queen; Savannah Roberts, Georgia Hereford Princess; Tammy and Tom Boatman holding Kade Boatman; Judge Hamilton Cornelius with his son John Hamilton; Locke, and brother Carter St. John.



The Grand Champion Bred and Owned Hereford Heifer for the 2008 SE Regional Show was LPH Marsha 57G T12, bred and owned by Krissi McCurdy. Pictured, left to right, are Sherman Leonard, Savannah Roberts, Mary Porter, Seth Ridley, with Peyton, Skylar, and MaKayla Ridley, Matt McCurdy, Judge Hamilton Cornelius and son John Hamilton, and Krissi McCurdy.



Winning Reserve Champion Bred and Owned Hereford Heifer was Morgan Dinsmore with SMD Ms Katlin M026 706 ET. Left to right are Mary Porter, Savannah Roberts, Dave Mooney, Judge Hamilton Cornelius, and Morgan Dinsmore.



Pictured is Tommie Lynne Mead holding her 2008 SE Regional Champion Cow/Calf Pair – THM 163M Vicky Belle 4016.



Whitney Sheppard is pictured holding her 2008 SE Regional Reserve Champion Cow/Calf Pair – CLH Aphrodite S17, along with Morgan Fondren, who is holding the bull calf – CLH WLS Achilles 80P U16.



2008 Southeastern Regional Junior Hereford Show

Friday & Saturday, June 27-28
AgriCenter • Perry, Ga.



Winning Intermediate Showmanship at the 2008 SE Regional Junior Hereford Show was Locke St. John, from Alabama. Holding his buckle is little brother Carter.



Krissi McCurdy, from Georgia, was the Reserve Champion Intermediate Showman. Pictured holding her buckle is MaKayla Ridley.



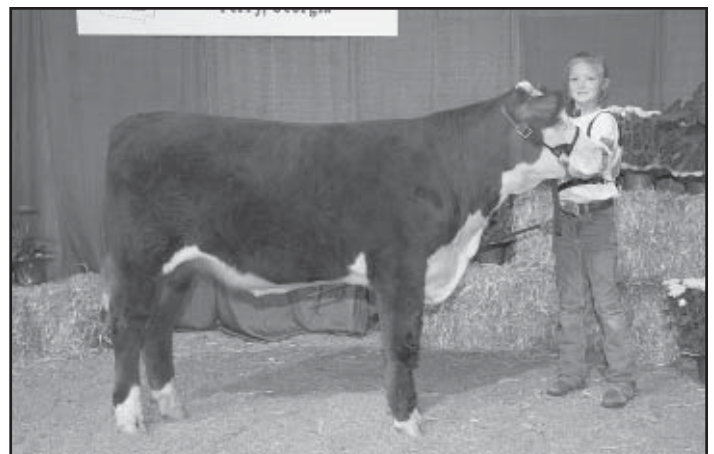
North Carolina's Alexis Eudy was named Junior Showmanship Champion.



Courtney Eudy, from North Carolina, was the Reserve Champion Junior Showman.



Champion PeeWee Showman is Grace Gullatt, from Alabama.



Reserve Champion PeeWee Showman is McKenzie Powell, from Georgia.

CALENDAR OF EVENTS

- *Aug. 30 2008 CES and Predestined Cattle Co. Sale
Wadley, GA
- *Sept. 1, 2008 Foundations for the Future '08
Walker Polled Hereford Farm
Morrison, TN
- *Sept. 20, 2008 Southern Circle Polled Hereford
Association Sale, Mid-South
Livestock Center, Brownsville, TN
- *Sept. 26, 2008 Camp Branch Farms and Henderson
Farms First Production Sale
Manor, GA
- *Sept. 27, 2008 CSR Polled Hereford Farm Sale
Alapaha, GA
- *Oct. 8, 2008 Georgia National Fair Hereford Show
Perry, GA

*See these sales advertised in this newsletter.

WEB PAGE TO BE REDESIGNED

After much discussion it has been decided that the website needs to be changed to include more information for breeders. Your input as to what information to include is requested. A lot of other states list their membership and update with minutes from meetings, etc. This website can be a tool for breeders across the country to look for information about our breeders. The web provider stats show that people search for breeder members to get to our site. Please direct comments and suggestions to Kay McCurdy at herefords@alltel.net.



MALCOLM FINANCIAL GROUP

"Since 1974"

B. Frank Malcolm, Sr., CLU
GCA Member
(Piedmont & Morgan)

Estate, Financial and Eldercare Planning

**"Folks don't plan to fail,
but many fail to plan."**

www.georgiaretirementcouncil.com

Office: **706-468-7550** Cell: **770-598-7192**
(Available for a limited number of programs in 2007.)

Contact Frank Malcolm at 706-468-7550, cell 770-598-7192,
or Bill Sims at 706-335-2808, cell 706-614-1255.

GHA Members Web Page and E-Mail Address



Apple Valley Farm – Bill Sims
E-mail: bsimsins@alltel.net

Cherry Ridge Farms – Ricky Yarbrough
Web Site: www.cherryridgefarms.com
E-mail: cherry_ridge@cattle-today.com

Georgia Hereford Association
Ricky Yarbrough, Site Manager, 478-986-5304
Web Site: www.georgiahereford.org

Hill-Vue Farm – Bud Hill
Web Site: www.hillvuefarm.com
E-mail: bud@hillvuefarm.com

JWR Land and Cattle – Wesley Rakestraw
Web Site: www.jwrlandandcattle.com
E-mail: jwrlandandcattle.com

Leonard Polled Herefords – Sherman Leonard
Web Site: <http://www.lphfarm.com>
E-mail: herefords@alltel.net

Mead Cattle Enterprises – Tommy Mead
Web Site: www.meadcattle.com
E-mail: meadcattle@jeffersonenergy.com

Kay McCurdy
E-mail: herefords@alltel.net

Moore Farms – Terry Moore
Web Site: <http://www.moorefarms.net>
E-mail: terry@moorefarms.net

Stonegate Farm – Bob Neligan
E-mail: bobneligan@yahoo.com

GEORGIA HEREFORD ASSOCIATION OFFICERS

<i>President</i> Randy Roberts 296 Bud Hutcheson Rd. Douglas, GA 31535 (912) 384-4349	<i>Vice President</i> Taylor Neighbors 525 District Line Rd. Americus, GA 31709 (229) 924-0091	<i>Secretary</i> Ray Hicks 660 Seaburn Vickery Rd. Statesboro, GA 30461 (912) 865-5593
---	--	--

DIRECTORS

Tommy Mead 1222 Reeves Rd. Midville, GA 30441 (706) 554-6107	Seth Ridley 130 Dogwood Circle Chatsworth, GA 30705 (706) 517-7606	Diann Strickland P.O. Box 128 Mershon, GA 31551 (912) 647-5439
Bobby Brantley 1750 Wommack Brantley Rd. Tennille, GA 31089 (478) 552-9328	Sam Zemurray 477 Honey Ridge Rd. Guyton, GA 31312 (912) 772-3118	Tom Boatman 478 Coots Lake Rd. Rockmart, GA 30153 (770) 684-1926
Whitey Hunt P. O. Box 488 Madison, GA 30650 (706) 342-0264	George Allen 864 Hardman Hooper Rd. Hull, GA 30646 (706) 548-5025	Tommy Johnson 7731 Bastonville Rd. Warrenton, GA 30828 (478) 465-2421

FOUNDATIONS FOR THE FUTURE '08

LABOR DAY • MONDAY, SEPT. 1, 2008

11 A.M. 60 LOTS

at Walker Polled Hereford Farm in Morrison, Tennessee

The sale offering consists of an exciting blend of show and herd sire prospects, powerful bred heifers, donor quality cows. Reference and service sires include Remitall Silencer 144S, Mohican Royal Class 427R, Top Secret, Kudzu, Brace II, 19D, Panama, P606, Neon 17N, Nasdaq, 71I, 369, 72P, 8E, Achiver, 8020, and more. Call to request a catalog. We hope to see you on Labor Day.



**Lot 1 – Sired by Prime Up
Dam by P606
Unlimited Potential**



**Lot 11 – Sired by Brace II
Bred to Walker WV JH Pronto 0901 443
Big volume, broody cow prospect**



**Lot 17 – Right to Flush
Beautiful P606 Female
Top Secret daughter sells**



**Lot 5 – Sired by Top Secret
Dam by P606
Sweet fronted and very correct**



**Lot 12 – Sired by Brace II
Bred to Top Secret
Deep, soggy and pigmented**



**Lot 22 – Sired by 101L (Full brother to P606)
Heifer calf by Brace II
Rebred to Royal Class**



**Lot 51A – Sired by Top Secret
Extreme length and thickness
Donor potential**



**Lot 10 – Rusty granddaughter
Bred to SHF REM Miami M03
Lots of pigment and freckles**



**Lot 23 – Strong Victor pedigree
Heifer calf by Top Secret
Bred to PW K120 Victor 369**



WALKER POLLED HEREFORD FARM

Eric, Rhonda, Cody, and Casey
P.O. Box 146 • Morrison, TN 37357
(931) 607-6356 • (931) 635-2181
(931) 668-4622 • Fax (931) 668-7365



JERNIGAN FARM

Mike, Debbie, Brittany,
Grant and Blake
7118 Zion Lane • Columbia, TN 38401
(931) 540-2848 • Fax (615) 418-2218

**PRM
POLLED HEREFORDS**

Peggy R. Moore
(540) 908-0777

PARTNERS IN PROGRESS XXII

**Saturday, August 30, 2008 • 11 a.m. (EDT)
at CES Polled Herefords, Wadley, Ga.**

Offering the South's Finest Polled Herefords, Angus, Black Baldies and Famous Friday Night Fish Fry



CES Angel 8E G112 ET

Calved: Dec. 25, 2007
Sire: Remitall Embracer 8E
Dam: CES Victoria 46B A349



CES FASINATING 533P 1G ET

Calved: Oct. 21, 2007
Sire: Star Bright Future 533P ET
Dam: Boyd DD Fasionation 1114



CES Vicra 73C C56

Calved: Nov. 13, 2003
Sire: RF Positive Plus 73C
Dam: JWS MS 103T F1
Sells with Dec. 19, 2007 bull calf sired by Brace 446.



Destin Emily Kay K16 G3 ET

Calved: July 31, 2007
Sire: Anhinga Vic S84 K16
Dam: CMR Emily P606 145N
Two flush sisters also sell.



Calved: Sept. 22, 2007
Sire: Grandview 7Oaks Sonora 145R
Dam: KG Tina Marie C33 ET

Auctioneer:

Eddie Burks, Ga. Lic. #NR2749
(270) 991-6398

*For catalog and more
information, contact: CES Polled
Herefords, Predestined Cattle Co.
or JDH Marketing Services*

**Polled Herefords sell at 11 a.m.,
followed by 75 Black Baldie
commercial females, then the
Smith Angus Sale at 1:30 p.m.**

LiveAuctions.TV



CES Polled Herefords

1095 Charles Smith Rd.
Wadley, GA 30477
Charles E. Smith, Owner
(478) 252-5622 • Fax (478) 252-8754
(478) 494-7567 Cell
Kyle Gillooly (478) 494-9593 Cell



Predestined Cattle Co.

2731 River Rd. • Wadley, GA 30477
Kyle and Jennifer Gillooly, Owners
(478) 625-7664 Home
Kyle cell (478) 494-9593
Jennifer cell (478) 494-6693
predestinedcattle@hotmail.com



JDH Marketing Services

Jack D. Hedrick
220 Rolling Fork
Columbus, MS 39705
(662) 327-3604
(662) 329-2643 Fax
(904) 613-4261 Cell
jdh@cableone.net

See catalog online at www.herfnet.com

GHA

P.O. Box 7627
Tifton, GA 31793

CHANGE SERVICE REQUESTED

PRSR - 1ST CLASS
U.S. POSTAGE
PAID
PERMIT NO. 370
TIFTON, GA 31793